



Maintenance Library

4701

**Controller
Models 1, 2, 3, and 5
Parts Catalog**

SC31-3529-1



Maintenance Library



**Controller
Models 1, 2, 3, and 5
Parts Catalog**

SC31-3529-1

Preface

This Parts Catalog (PC) contains listings and illustrations of all replaceable assemblies, subassemblies and detail parts released to Production Control on or before November 1984 for the 4701 Controller, Models 1, 2, 3, and 5.

Second Edition, December 1984

This is a major revision of, and obsoletes, SC31-3529-0

Information contained in this manual is subject to change from time to time. Any such change will be reported in subsequent revisions or Technical Newsletters.

IBM has prepared this maintenance manual for the use of IBM customer engineers in the installation, maintenance, or repair of the specific machines indicated. IBM makes no representations that it is suitable for any other purpose.

The drawings and specifications contained herein shall not be reproduced in whole or in part without written permission.

It is possible that this manual may contain reference to, or information about, IBM products (machines and programs), programming, or services that are not announced in your country. Such references or information must not be construed to mean that IBM intends to announce such IBM products, programming, or services in your country.

Publications are not stocked at the address given below; request for IBM publications should be made to your IBM representative or to the IBM branch office serving your locality.

A form for reader's comments is provided at the back of this publication. If the form has been removed, comments may be addressed to IBM Corporation, Publications Development, Department 78C, 1001 W.T. Harris Boulevard, Charlotte, NC, 28257, USA. IBM may use or distribute any of the information you supply in any way it believes appropriate without incurring any obligation whatever. You may, of course, continue to use the information you supply.

HOW TO USE THIS PARTS CATALOG

HOW TO FIND PART INFORMATION:

WHEN ASSEMBLY LOCATION IS KNOWN

PERFORM STEPS

- 1 3 AND 4

WHEN ASSEMBLY NAME IS KNOWN

PERFORM STEPS

- 2 3 AND 4

WHEN PART NUMBER IS KNOWN

PERFORM STEPS

- 5 6 AND 7

1
TURN TO THE VISUAL INDEX - THEN LOCATE, BY ILLUSTRATION, THE ASSEMBLY CONTAINING THE PART.

2
TURN TO THE CONTENTS PAGE - THEN LOCATE, BY NAME, THE ASSEMBLY CONTAINING THE PART.

3
TURN TO THE PAGE FOR THAT ASSEMBLY - THEN LOCATE THE PART VISUALLY.

4
USING THE INDEX NUMBER SHOWN WITH THE PART, REFER TO THE ACCOMPANYING LISTING TO OBTAIN THE PART NUMBER, DESCRIPTION AND QUANTITY.

5
TURN TO THE NUMERICAL INDEX - THEN NOTE THE FIGURE AND INDEX NUMBER GIVEN FOR THAT PART NUMBER.

6
TURN TO THE FIGURE NUMBER GIVEN - THEN FIND THE INDEX NUMBER ON THE ILLUSTRATION.

7
FIND THE CORRESPONDING INDEX NUMBER IN THE ACCOMPANYING LISTING TO OBTAIN THE DESCRIPTION AND QUANTITY OF THE PART.

Numerical Index

PART NO.	FIG. NO.	PART NO.	FIG. NO.	PART NO.	FIG. NO.	PART NO.	FIG. NO.
5790253	3	4					
5790382	25						

NOTE:
IF THE DESIRED ITEM IS PART OF A SUBASSEMBLY NOT BROKEN DOWN WITHIN THAT FIGURE, REFER TO THE FIGURE ASSIGNED TO THE SUB-ASSEMBLY, LOCATE THE PART VISUALLY AND OBTAIN THE PART NUMBER, DESCRIPTION AND QUANTITY FROM THE ACCOMPANYING LISTING.

GLOSSARY

- ① NO P/N - When this notation appears in the Part No. column, it denotes a part or group of parts that have not been assigned a part number or which are not recommended for field replacement.
- ② NR - This notation in the Part No. column denotes a part not recommended for field replacement.
- ③ NP - This notation in the Part No. or Description column indicates parts that are non-procurable. In these cases the next higher assembly should be ordered.
- ④ AR - The notation AR in the Units Per Asm. column indicates that the quantity of the part is used as required.
- ⑤ REF - The notation REF in the Units Per Asm. column indicates that the listing of the assembly is repeated and reference should be made to its previous listing for the quantity required.
- ⑥ SIMILAR ASSEMBLIES - If two or more assemblies contain a majority of identical parts, they are combined in the same listing. Parts common to assemblies are illustrated and listed by one index number. Parts peculiar to one or the other of the assemblies are listed separately and identified either in the description of the part, or by a descriptive trailer line.
- ⑦ INDENTURE - The indentation of items under the numerals 1 through 4 at the head of the Description column shows the relationship between assemblies, subassemblies and detail parts. For example:

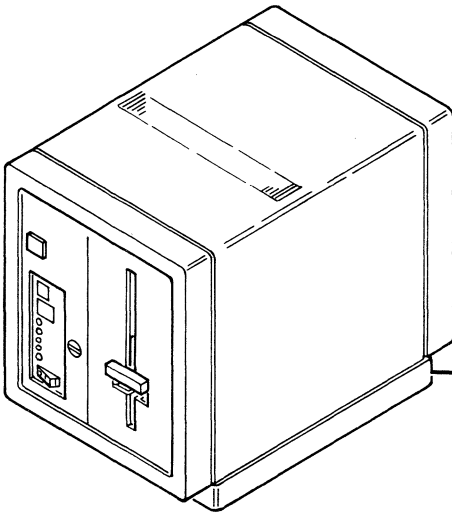
	1	2	3	4
(No dot)	MAIN ASSEMBLY			
(One dot)	•	Detail parts of main assembly		
(One dot)	•	Assembly within main assembly		
(Two dot)	•	•	Detail part of one dot assembly	
(Two dot)	•	•	Assembly within one dot assembly	
(Three dot)	•	•	•	Detail parts of two dot assembly

FIGURE INDEX NUMBER	PART NUMBER	UNITS PER ASM.	DESCRIPTION			
			1	2	3	4
22 -	No. P/N	REF	TRANSPORT AND VACUUM ASSEMBLY			
			THIS ASSEMBLY CANNOT BE ORDERED FOR REPLACEMENT, SEE LIST 2-252 FOR NEXT HIGHER ASM			
- 1	1846187	1	• DOOR ASSEMBLY, VACUUM COLUMN - MODS 6, 8			
- 1	1846188	1	• DOOR ASSEMBLY, VACUUM COLUMN - MOD 4			
			FOR DETAIL BREAKDOWN, SEE FIGURE 23A			
- 2	55918	5	• SCREW, MACH BD HD — 10-32 X 0.625 LG			
- 3	45690	5	• WASHER, FL — 0.203 ID X 0.408 OD			
- 4	2512946	AR	• SHIM, DOOR VAC COLUMN 0.015 THK			
- 4	2512948	AR	• SHIM, DOOR VAC COLUMN 0.030 THK			
- 5	1846100	AR	• PNEUMATIC HOSES TRANSPORT ASSEMBLY			
			FOR DETAIL BREAKDOWN, SEE FIGURE 24			
- 9	2523727	1	• DISC, DECORATIVE			
- 10	1767707	1	• COVER			
- 11	322562	3	• SCREW, BD HD — 10-32 X 2.000 INCHES LG			
- 12	1767705	1	• CAM			
- 13	1766920	1	• SPRING, COMP 1.190 OD X 2.750 LG			
- 14	1767720	1	• HUB ASM			
- 15	356742	3	• • CLAMP, 0.375 ID X 0.173 MTG HOLE			
- 16	5489002	3	• • SCREW, MACH BD HD — 6-32 X 0.250 LG			
- 17	1090873	6	• • LOCKWASHER, SPLIT — 0.168 ID X 0.296 OD			
- 18	1767703	3	• • ROLLER, TRIPLE			
- 19	1767711	3	• • ROLLER, SINGLE			

CONTENTS

	Page
4701 Controller Assembly – Models 1, 2, 3, and 5	2
File Box Assembly	12
Disk Expansion Unit Assembly	16
Communications Expansion Unit Assembly	22
Fixed Disk Mounting Assembly	28
Base Assembly	30
Cable Assemblies and Component Parts	40

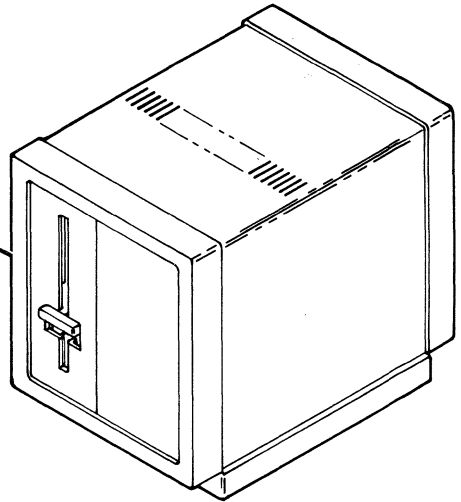
VISUAL INDEX



4701 Controller
Models 1, 2, 3, and 5
Figure 1
Pages 2-11

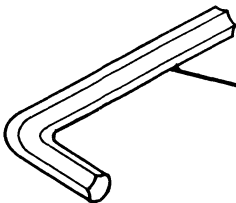
Base Assembly
Figure 6
Pages 30-39

4701 CONTROLLER



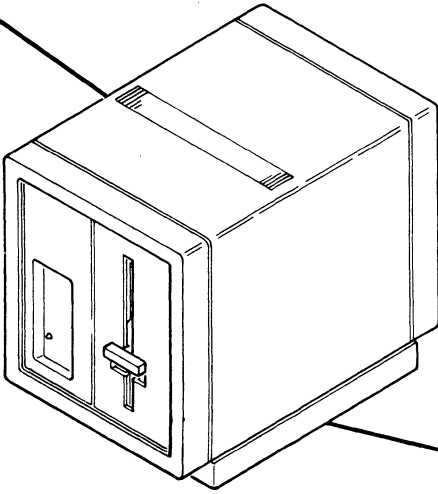
File Box Assembly
(Aux File)
Frame 2
Figure 2
Pages 12-15

FILE BOX ASSEMBLY

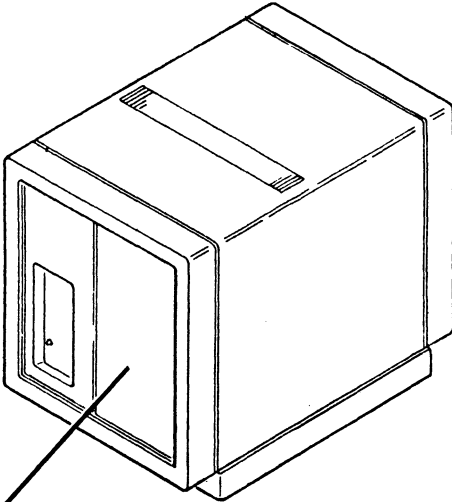


Tool-Cover Removal
P/N 1749238

Disk Expansion Unit
Frame 3
Figure 3
Pages 16-21



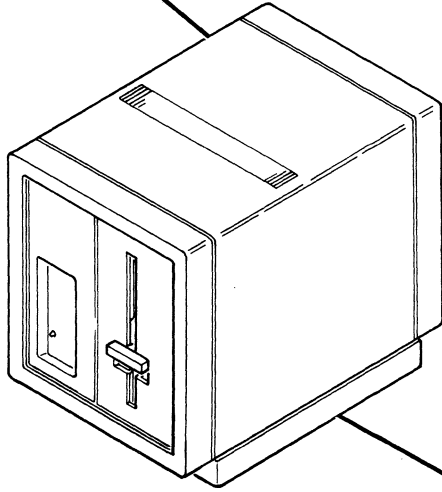
Base Assembly
Figure 6
Pages 30-39



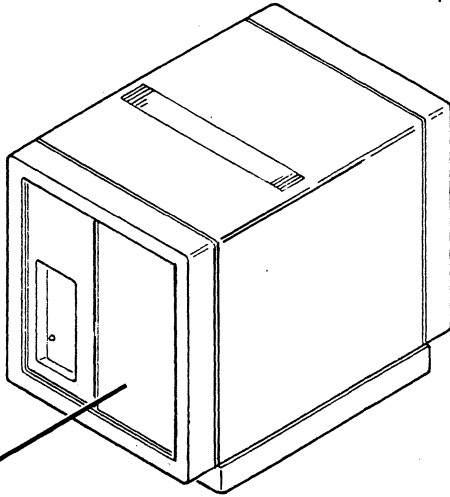
Fixed File Mounting Assembly
Figure 5
Pages 28-29

DISK EXPANSION UNIT

Communications Expansion Unit
Frame 4
Figure 4
Pages 22-27



Base Assembly
Figure 6
Pages 30-39



Fixed File Mounting Assembly
Figure 5
Pages 28-29

COMMUNICATIONS EXPANSION UNIT

CATALOG SECTION

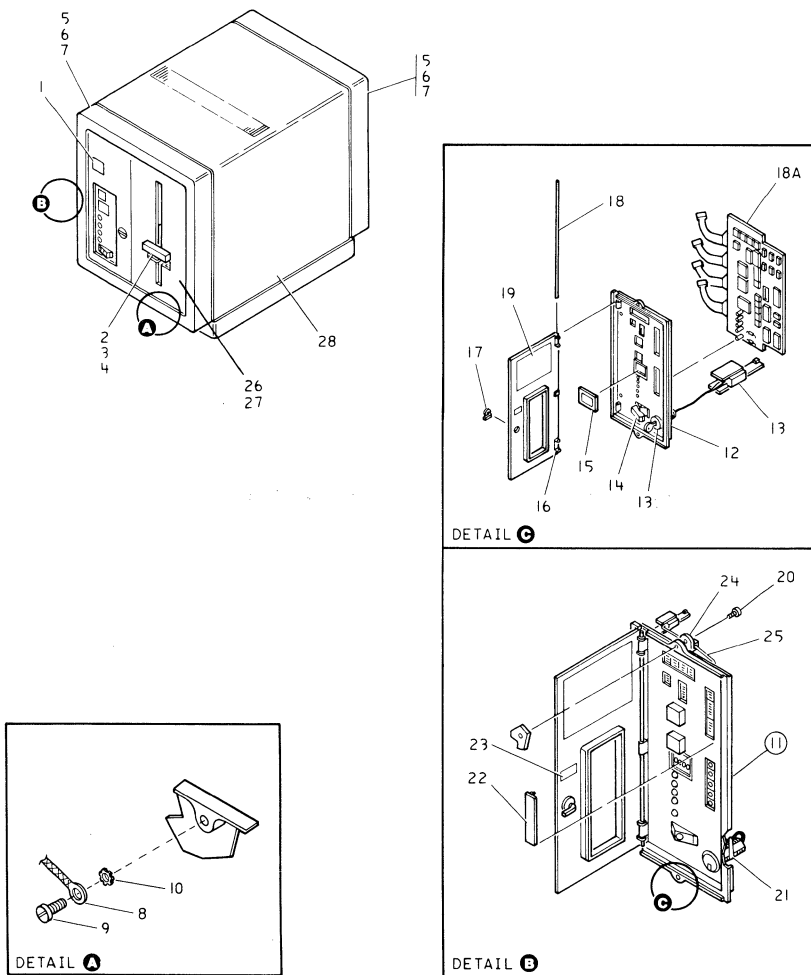


Figure 1. 4701 CONTROLLER ASSEMBLY (1 of 5)

FIGURE INDEX	PART NUMBER	UNITS	DESCRIPTION
1-	6018781	NP	4701 CONTROLLER-MODEL 1
-	8259390	NP	4701 CONTROLLER-MODEL 2
-	6125522	NP	4701 CONTROLLER-MODEL 3
-	6019011	NP	4701 CONTROLLER-MODEL 5
			FOR ILLUSTRATION SEE FIGURE 1
-1	6018809	1	.NAMEPLATE-MODEL 1
-1	6018846	1	.NAMEPLATE-MODEL 2
-1	6096633	1	.NAMEPLATE-MODEL 3
-1	6019027	1	.NAMEPLATE-MODEL 5
-2	6842908	1	.LATCH ASSEMBLY
-3	1621182	1	.SCREW
-4	1622402	1	.NUT
-5	6018842	2	.BEZEL-FRONT OR REAR
-6	1621190	4	.SCREW
-7	1622346	4	.LOCKWASHER
-8	676748	1	.JUMPER
-9	1621190	1	.SCREW
-10	1622346	1	.LOCKWASHER
-11	6018744	1	.OPERATOR PANEL ASSEMBLY
-12	6018746	1	..PANEL
-13	6018769	1	..CABLE ASSEMBLY WITH SWITCH LOCK
-14	6018793	1	..SWITCH-A.C. POWER
-15	6018779	1	..FILTER
-16	6018745	1	..DOOR
-17	6018851	1	..LATCH
-18	6018778	1	..HINGE PIN
-18A	No PN	1	..CABLE ASSEMBLY AND CARD
			REFER TO REPAIR MANUAL SC31-3511
-19	6098785	1	..LABEL
-20	1621192	2	.SCREW
-21	1159519	1	.TY-STRAP
-22	6018776	2	.PLUG
-23	818579	1	.LABEL-FROM MARKER STRIP
-24	5213276	1	.CABLE CLAMP
-25	6018769	1	.CABLE ASSEMBLY
-26	6018743	1	.FILE PANEL
-27	1621192	3	.SCREW
-28	6018840	1	.COVER

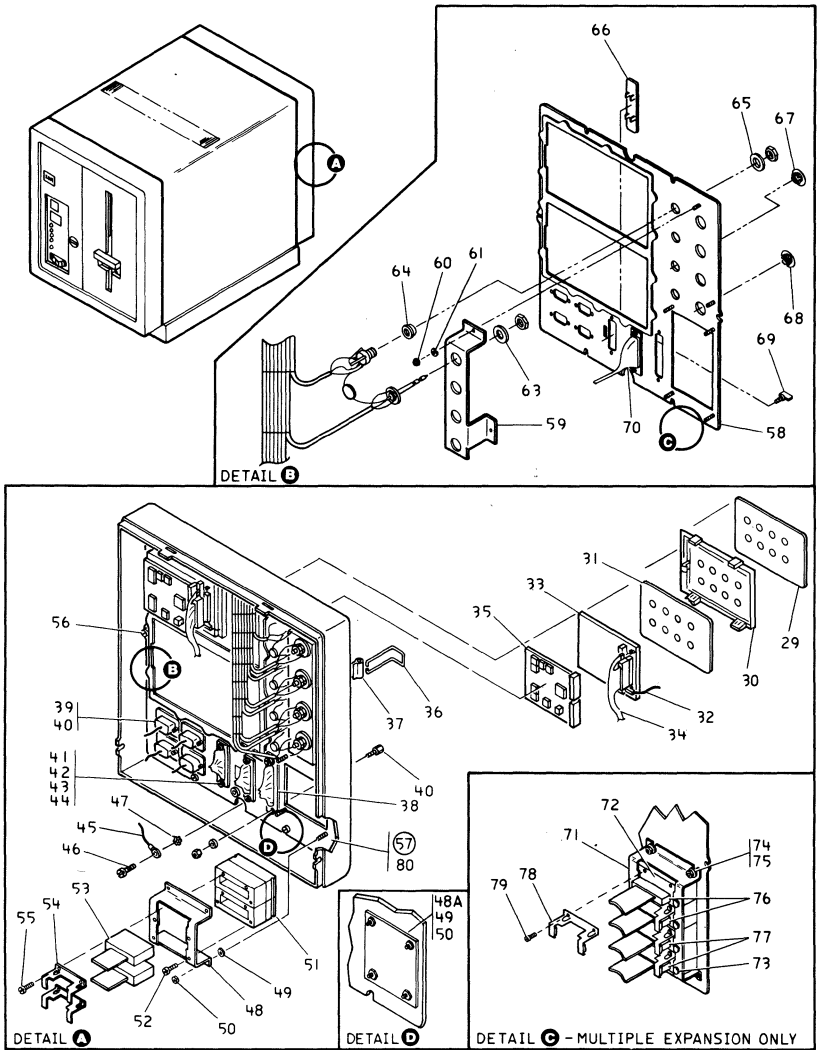


Figure 1. 4701 CONTROLLER ASSEMBLY (2 of 5)

FIGURE INDEX	PART NUMBER	UNITS	DESCRIPTION
1-29	6018787	1	.OVERLAY-PORTS 0 TO 7
-29	6018789	1	.OVERLAY-BLANK
-29	8259370	1	.OVERLAY-PORTS 8 TO 15
-30	5699514	1	.PANEL
-31	6125591	1	.PLATE
-32	8259377	1	.JUMPER ASSEMBLY
-33	5267709	1	.CARD ASSEMBLY
-34	6018766	1	.CABLE ASSEMBLY
-35	5699968	1	.CARD ASSEMBLY
-36	5718360	1	.BAIL
-37	6096873	1	.CLIP
-38	6018762	1	.CABLE ASSEMBLY
-39	6018768	1	.CABLE ASSEMBLY
-40	4405859	5	.MOUNTING KIT
-41	8259721	1	.CABLE ASSEMBLY
-42	1621285	2	.SCREW
-43	1622344	2	.LOCKWASHER
-44	1622401	2	.NUT
-45	676748	Ref	.JUMPER ASSEMBLY
-46	1621190	1	.SCREW
-47	1622346	1	.LOCKWASHER
-48	6096878	1	.BRACKET-2 POSITION
-48A	8583339	1	.PLATE-BLANK
USED ON NON-EXPANSION UNITS			
-49	1622344	4	.LOCKWASHER
-50	1622401	4	.NUT
-51	8583338	2	.CONNECTOR
-52	1622850	4	.SCREW
-53	8583337	1	.CABLE ASSEMBLY
-54	5404468	2	.BRACKET
-55	112628	4	.SCREW
-56	1622346	3	.LOCKWASHER
USED WHEN ATTACHING JUMPERS TO PANEL ASSEMBLY			
-57	6018750	NR	.PANEL ASSEMBLY-MODELS 1,2 AND 3 (2 LOOPS)
-57	6018855	NR	.PANEL ASSEMBLY-MODELS 1,2 AND 3 (4 LOOPS)
-57	8250006	NR	.PANEL ASSEMBLY-MODELS 1,2 AND 3 (8 PORTS,2 LOOPS)
-57	8250007	NR	.PANEL ASSEMBLY-MODELS 1,2 AND 3 (8 PORTS,4 LOOPS)
-57	8250008	NR	.PANEL ASSEMBLY-MODELS 1,2 AND 3 (16 PORTS,2 LOOPS)
-57	8250009	NR	.PANEL ASSEMBLY-MODELS 1,2 AND 3 (16 PORTS,4 LOOPS)
-57	6125583	NR	.PANEL ASSEMBLY-MODELS 2 AND 3 (4 LOOP,MULTIPLE EXPANSION UNITS)
-57	6125584	NR	.PANEL ASSEMBLY-MODELS 2 AND 3 (2 LOOP,MULTIPLE EXPANSION UNITS)
-57	6019036	NR	.PANEL ASSEMBLY-MODEL 5 ONLY

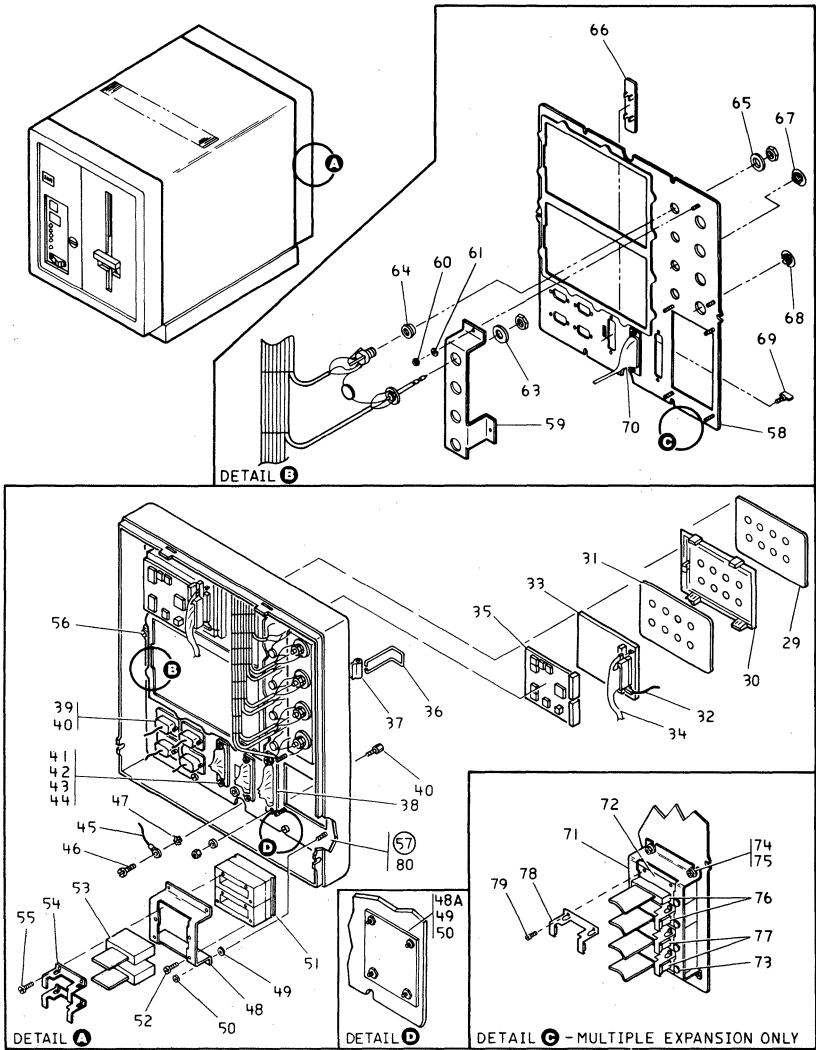


Figure 1. 4701 CONTROLLER ASSEMBLY (3 of 5)

FIGURE INDEX	PART NUMBER	UNITS	DESCRIPTION
1-58	6096913	1	..REAR MOUNTING PLATE-MULTIPLE EXPANSION UNITS
-58	8250003	1	..REAR MOUNTING PLATE-16 PORTS
-58	8250000	1	..REAR MOUNTING PLATE-16 PORTS
-58	8250004	1	..REAR MOUNTING PLATE-8 PORTS
-58	8250001	1	..REAR MOUNTING PLATE-8 PORTS
-58	8250005	1	..REAR MOUNTING PLATE-BASIC 2 OR 4 LOOPS
-58	8250002	1	..REAR MOUNTING PLATE-2 LOOPS
-59	6096904	1	..BRACKET-MULTIPLE EXPANSION UNIT
-59	6018843	1	..BRACKET-BASIC
-60	1622403	2	..NUT
-61	1622346	2	..LOCKWASHER
-63	528356	AR	..LOCKWASHER
-64	2263808	AR	..WASHER
-65	2133437	AR	..WASHER
-66	5680978	AR	..PLUG
-67	6018797	AR	..PLUG
-68	6018798	AR	..PLUG
-69	5267844	1	..STUD
-70	6018767	1	..CABLE ASSEMBLY
-71	6096905	1	..BRACKET-4 POSITION, MODELS 2 AND 3
-72	8583336	4	..CONNECTOR
-73	1622850	8	..SCREW
-74	1622346	4	..LOCKWASHER
-75	1622403	4	..NUT
-76	8583337	1	..CABLE ASSEMBLY
-77	6098789	1	..CABLE ASSEMBLY
-78	5404468	4	..BRACKET
-79	112628	8	..SCREW
-80	1621197	6	..SCREW

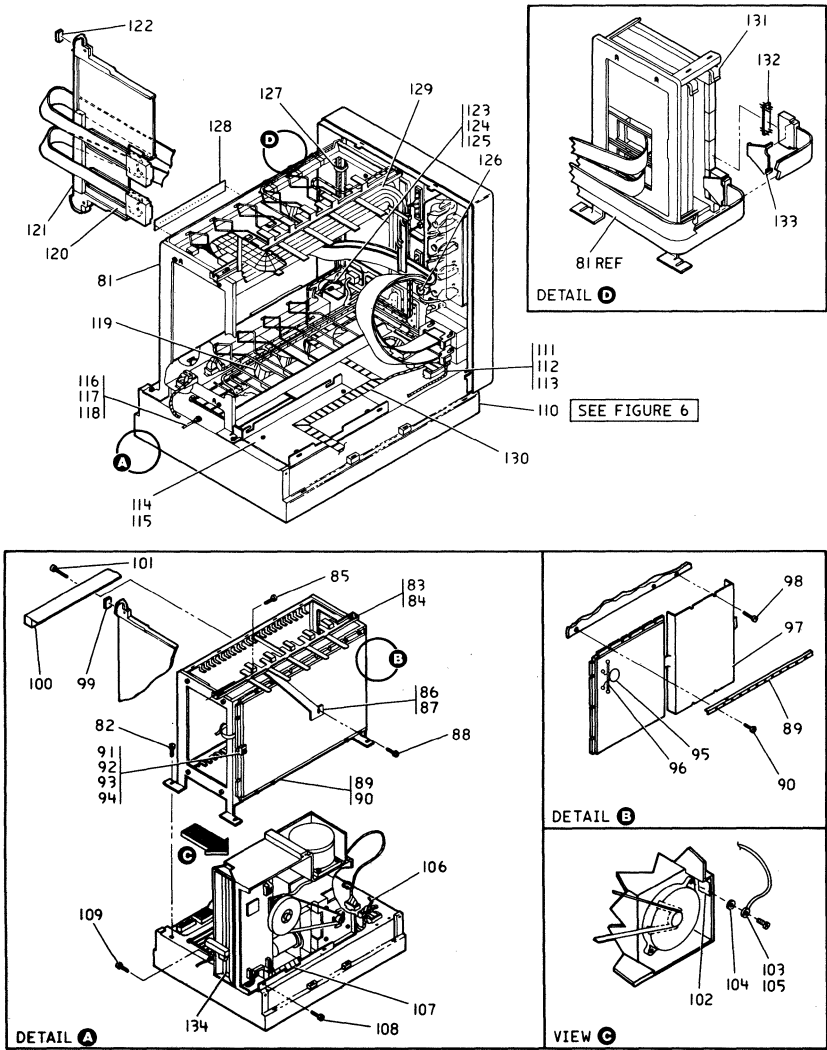


Figure 1. 4701 CONTROLLER ASSEMBLY (4 of 5)

FIGURE INDEX	PART NUMBER	UNITS	DESCRIPTION
1-81	6018737	1	.GATE ASSEMBLY
-82	1621190	4	.SCREW
-83	6018757	1	.TIE BAR
-84	1621851	2	.SCREW
-85	1621190	2	.SCREW
			ATTACHES TO FRONT AND REAR BEZELS
-86	6018785	1	.BRACKET
-87	1621851	1	.SCREW
-88	1621190	1	.SCREW
-89	8259712	2	.RETAINER
-90	2181088	8	.SCREW-MODELS 1,2 AND 3
-91	5241434	2	.RETAINER
-92	2181088	2	.SCREW
-93	6364	2	.WASHER
-94	257187	2	.NUT
-95	6096895	1	.CAPACITOR ASSEMBLY
-96	815080	1	.RETAINER
-97	6019017	1	.SPACER-MODEL 5 ONLY
-98	1621846	4	.SCREW-MODEL 5 ONLY
-99	818579	1	.LABEL-A THRU V
-100	5267932	2	.BRACKET ASSEMBLY
-101	5507392	6	.SCREW
-102	5865679	1	.LABEL
-103	8709180	1	.GROUND STRAP
-104	1622346	1	.LOCKWASHER
-105	1159519	1	.TY-WRAP
-106	6018762	1	.CABLE ASSEMBLY
-107	6019012	1	.CABLE ASSEMBLY
-108	1621190	2	.SCREW
-109	6018808	2	.SCREW
-110	6018811	1	.BASE ASSEMBLY-100/127 V,60 HZ- MODELS 1,2 AND 5
-110	6018812	1	.BASE ASSEMBLY-100/127 V,50 HZ- MODELS 1,2 AND 5
-110	6018813	1	.BASE ASSEMBLY-200/240 V,50 HZ- MODELS 1,2 AND 5
-110	6125519	1	.BASE ASSEMBLY-100/127 V,60 HZ- MODEL 3 ONLY
-110	6125520	1	.BASE ASSEMBLY-100/127 V,50 HZ- MODEL 3 ONLY
-110	6125521	1	.BASE ASSEMBLY-200/240 V,50 HZ- MODEL 3 ONLY
			FOR DETAIL BREAKDOWN SEE FIGURE 6
-111	8709180	1	.JUMPER ASSEMBLY
-112	1621197	1	.SCREW
-113	1622346	1	.LOCKWASHER
-114	6018791	1	.BRACKET
-115	1621190	1	.SCREW
-116	676748	1	.JUMPER ASSEMBLY
-117	1621190	1	.SCREW
-118	1622346	1	.LOCKWASHER
-119	6018767	1	.CABLE ASSEMBLY-EIA TO LOGIC BOARD

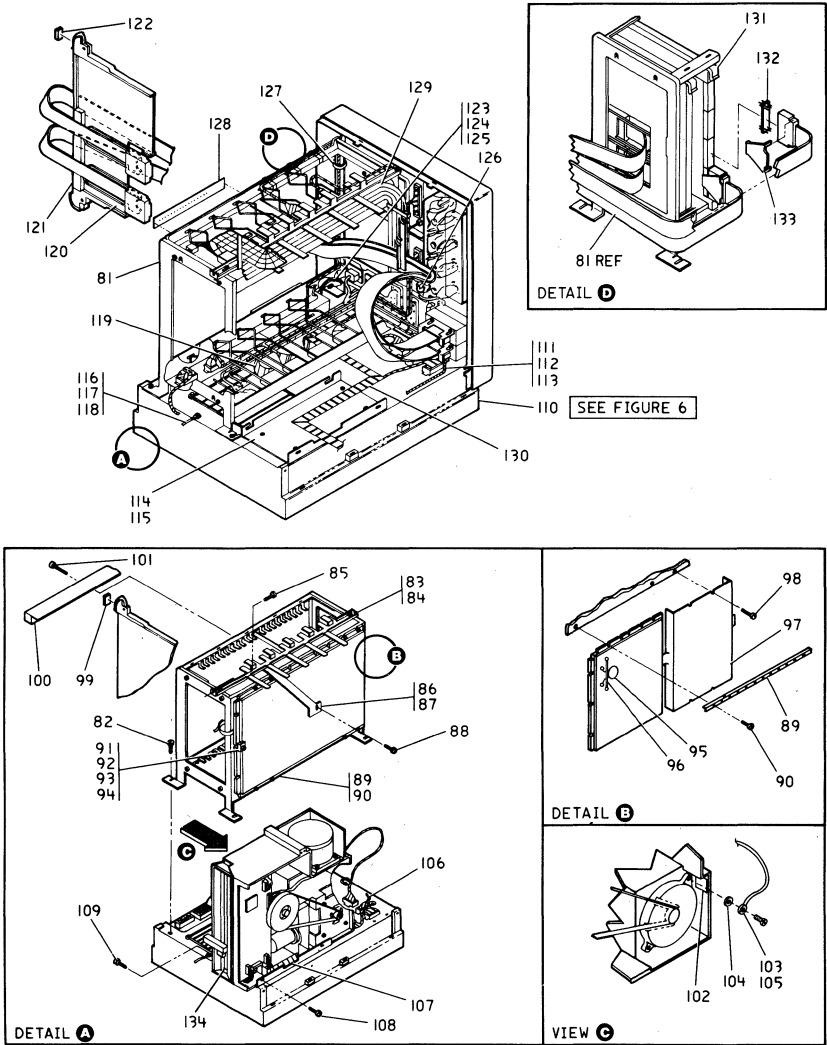


Figure 1. 4701 CONTROLLER ASSEMBLY (5 of 5)

FIGURE INDEX	PART NUMBER	UNITS	DESCRIPTION
1-120	7389284	2	.RETAINER
-121	8583336	1	.RETAINER
-122	1743001	1	.LABEL-A
-123	676748	1	.JUMPER ASSEMBLY
-124	1621190	1	.SCREW
-125	1622346	1	.LOCKWASHER
-126	8259377	1	.JUMPER ASSEMBLY
-127	1159519	10	.TY-WRAP
-128	5718378	1	.LABEL
-129	6018759	1	.CABLE ASSEMBLY-2 LOOPS
-129	6018807	1	.CABLE ASSEMBLY-4 LOOPS
-130	6019012	1	.CABLE ASSEMBLY-TO FILE
-131	6096912	1	.HOLDER
-132	5997533	2	.INTERPOSER
-133	7389394	2	.RETAINER
-134	4240516	1	.FILE-100/127 V,60 HZ-1 MB
-134	4240512	1	.FILE-100/127 V,50 HZ-1 MB
-134	4240513	1	.FILE-200/240 V,50 HZ-1 MB

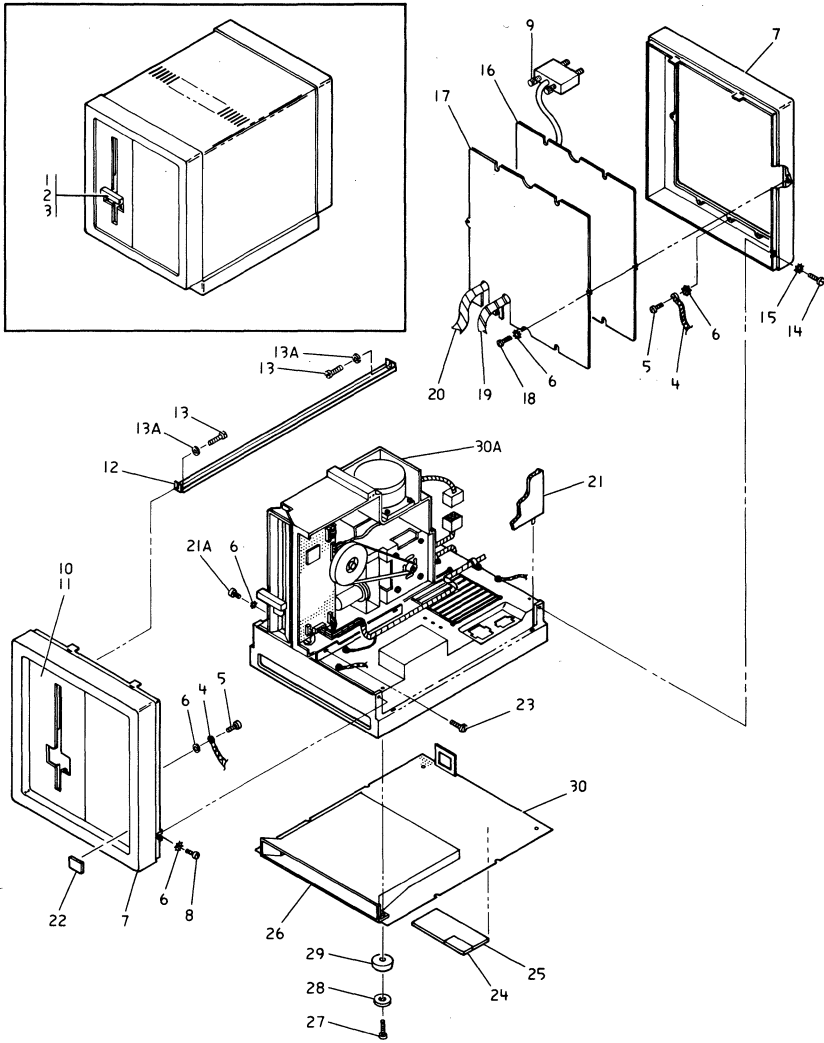


Figure 2. FILE BOX ASSEMBLY (1 of 2)

FIGURE INDEX	PART NUMBER	UNITS	DESCRIPTION
2-	6018773	NP	FILE BOX ASSEMBLY FOR ILLUSTRATION SEE FIGURE 2
-1	6842908	1	.LATCH ASSEMBLY
-2	1621182	1	.SCREW
-3	1622402	1	.NUT
-4	676748	1	.JUMPER ASSEMBLY
-5	1621190	2	.SCREW
-6	1622346	6	.LOCKWASHER
-7	6018741	2	.BEZEL-FRONT OR REAR
-8	1621190	2	.SCREW
-9	6019419	2	.SCREW
-10	6018742	1	.COVER-FRONT FILE
-11	1621192	6	.SCREW
-12	6018736	1	.TIE BAR
-13	1621190	2	.SCREW
-13A	1622346	2	.LOCKWASHER
-14	1621190	2	.SCREW
-15	1622346	2	.LOCKWASHER
-16	6018814	1	.OVERLAY
-17	6018815	1	.PLATE-REAR MOUNTING
-18	1621190	6	.SCREW
-19	6018770	1	.CABLE ASSEMBLY
-20	6018771	1	.CABLE ASSEMBLY
-21	6108753	1	.COVER
-21A	1621190	2	.SCREW
-22	8588568	1	.LABEL-LOGO,2
-23	1621190	2	.SCREW
-24	6196506	1	.LABEL
-25	6019241	1	.LABEL
-26	6018732	1	.HOLDER-FILE
-27	1621512	4	.SCREW
-28	1091508	4	.WASHER
-29	1561396	4	.BUMPER
-30	6018792	1	.COVER
-30A	4240516	1	.FILE-100/127 V,60 HZ-1 MB
-30A	4240512	1	.FILE-100/127 V,50 HZ-1 MB
-30A	4240513	1	.FILE-200/240V,50 HZ-1 MB

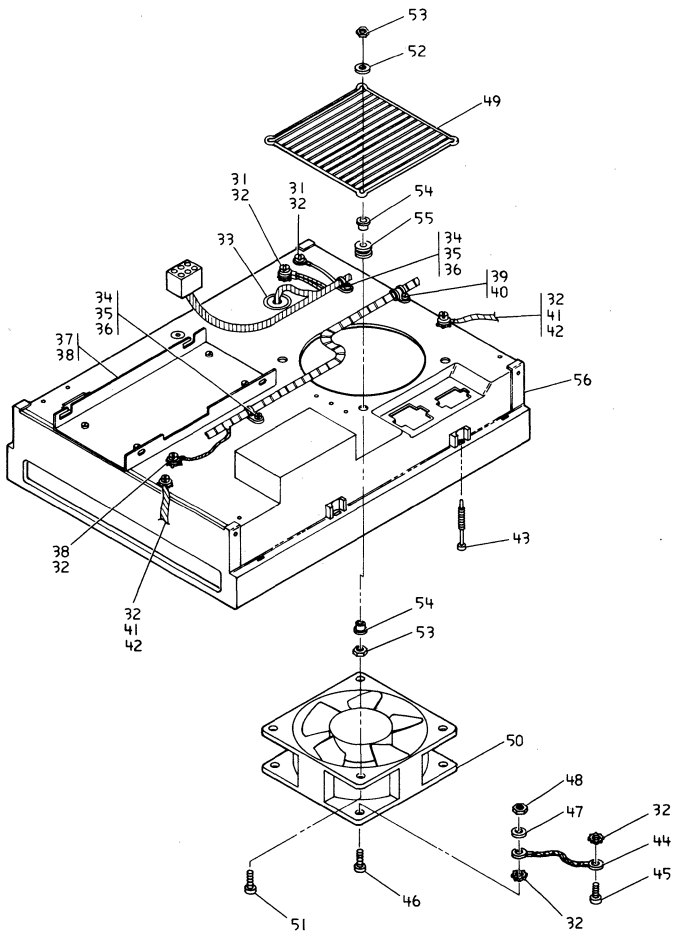


Figure 2. FILE BOX ASSEMBLY (2 of 2)

FIGURE INDEX	PART NUMBER	UNITS	DESCRIPTION
2-31	1621190	2	.SCREW
-32	1622346	6	.LOCKWASHER
-33	6018817	1	.BUSHING
-34	2277579	2	.MOUNT
-35	1621190	2	.SCREW
-36	1159519	2	.TY-STRAP
-37	6018791	1	.BRACKET
-38	1621190	5	.SCREW
-39	4411361	1	.CLAMP
-40	1621190	2	.SCREW
-41	676748	2	.JUMPER ASSEMBLY
-42	1621190	2	.SCREW
-43	6018795	2	.SCREW
-44	2159768	2	.JUMPER ASSEMBLY
-45	1621190	1	.SCREW
-46	1621173	1	.SCREW
-47	1622304	1	.WASHER
-48	1622401	1	.NUT
-49	177946	1	.GRILL
-50	4176642	1	.FAN-100/127 V,50 OR 60 HZ
-50	6837984	1	.FAN-200/240 V,50 HZ
-51	1621026	2	.SCREW
-52	1622304	2	.WASHER
-53	1622401	4	.NUT
-54	21200	4	.BUSHING
-55	79780	4	.GROMMET
-56	6018777	1	.CASTING-BASE

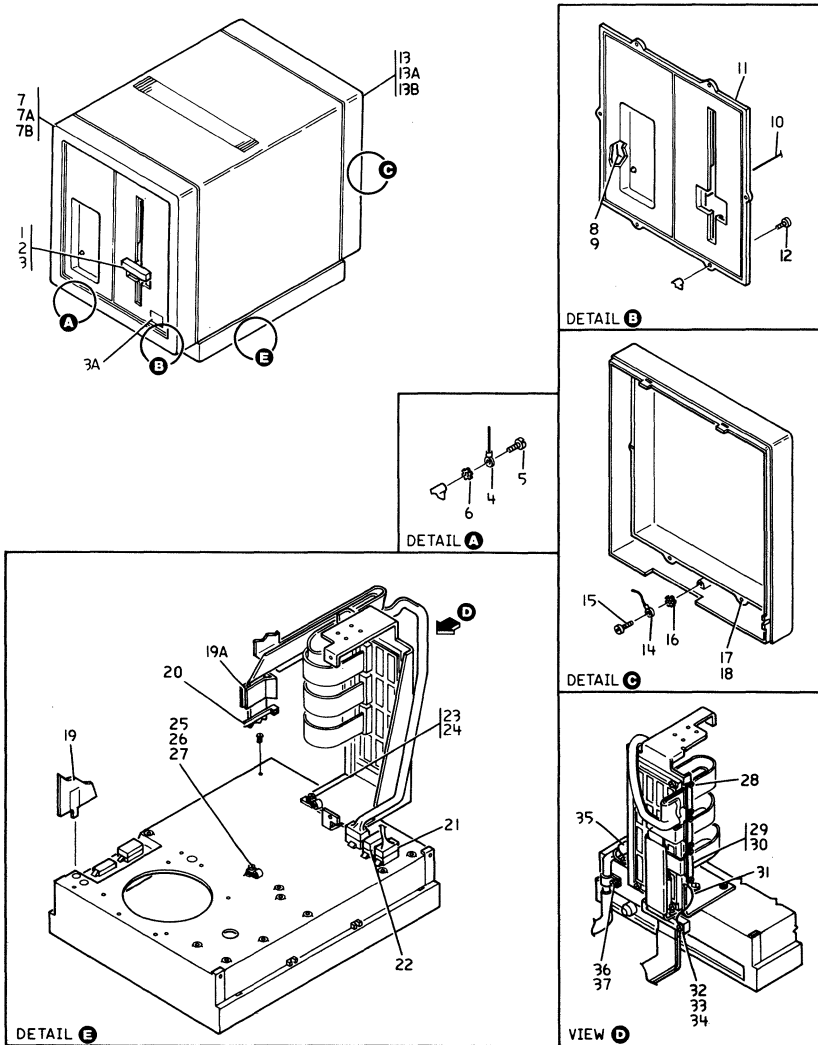


Figure 3. DISK EXPANSION UNIT (1 of 3)

FIGURE INDEX	PART NUMBER	UNITS	DESCRIPTION
3-	8299492	NP	DISK EXPANSION UNIT (DEU)
-	8259491	NP	DISK EXPANSION UNIT (DEU) FOR ILLUSTRATION SEE FIGURE 3
-1	6842908	1	.LATCH ASSEMBLY
-2	1621182	1	.SCREW
-3	1622402	1	.NUT
-3A	6098783	1	.LABEL-LOGO,3CD
-3A	8588570	1	.LABEL-LOGO,3
-4	6096877	1	.JUMPER ASSEMBLY
-5	1621190	1	.SCREW
-6	1622346	1	.LOCKWASHER
-7	6018842	1	.BEZEL
-7A	1621190	3	.SCREW
-7B	1622346	2	.LOCKWASHER
-8	No PN	1	.CARD-INDICATOR
-9	1621851	2	.SCREW
-10	8259527	1	.CABLE ASSEMBLY-INDICATOR PANEL
-11	8259523	1	.PANEL-FRONT
-11	8259524	1	.PANEL-FRONT
-12	1621192	6	.SCREW
-13	8583332	1	.BEZEL
-13A	1621190	3	.SCREW
-13B	1622346	2	.LOCKWASHER
-14	676748	1	.JUMPER
-15	1621190	1	.SCREW
-16	1622346	1	.LOCKWASHER
-17	8259521	1	.COVER-REAR
-18	1621191	6	.SCREW
-19	6018840	1	.COVER
-19A	4423063	2	.CLAMP
-20	1145574	1	.TY-WRAP
-21	8259547	1	.CABLE
-21	8259531	1	.CABLE
-21	8259546	1	.CABLE
-22	1847528	1	.PLUG
-23	2277579	1	.MOUNT
-24	5420242	1	.TY-WRAP
-25	2277579	2	.MOUNT
-26	5420242	1	.TY-WRAP
-27	1621190	1	.SCREW
-28	1621193	2	.SCREW
-29	8583324	3	.CLAMP
-30	1621192	6	.SCREW
-31	8259526	1	.CABLE ASSEMBLY
-32	8583325	1	.CLAMP
-33	1621194	2	.SCREW
-34	1622346	2	.LOCKWASHER
-35	8259509	1	.CABLE ASSEMBLY
-36	4411361	1	.CLAMP
-37	1621190	1	.SCREW

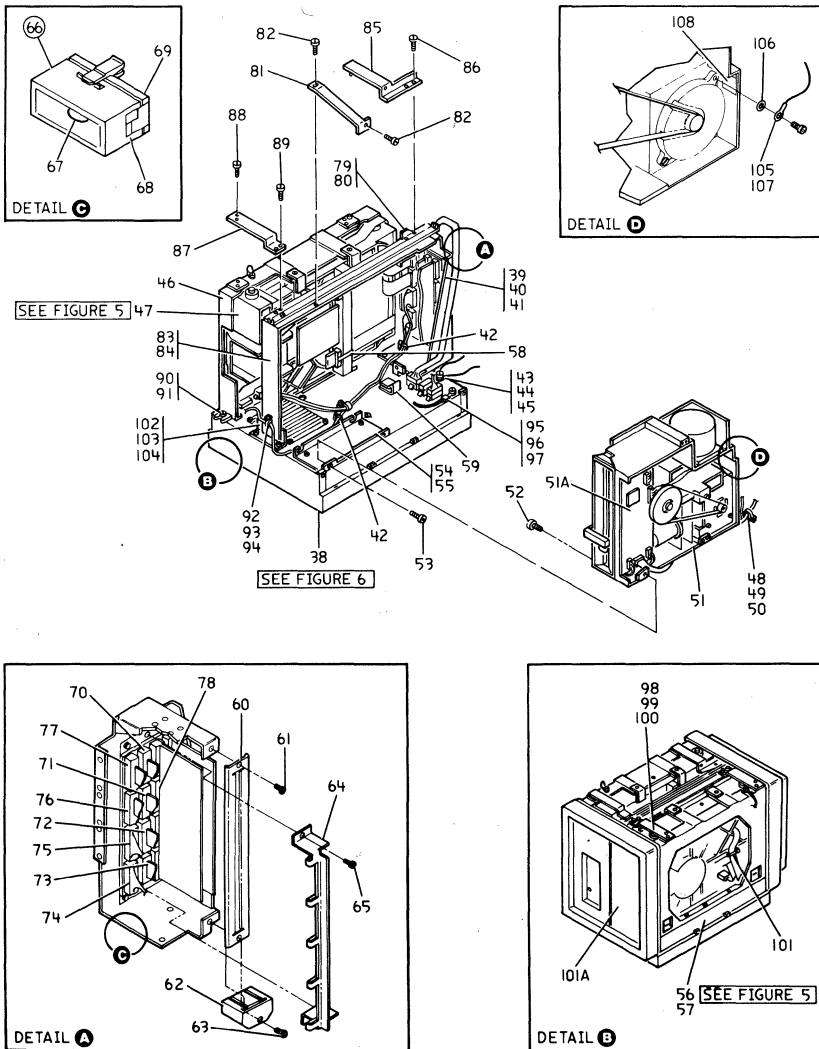


Figure 3. DISK EXPANSION UNIT (2 of 3)

FIGURE INDEX	PART NUMBER	UNITS	DESCRIPTION
3-38	8259487	1	.BASE ASSEMBLY-100/127 V,50/60 HZ
-38	8259488	1	.BASE ASSEMBLY-200/240 V,50 HZ FOR DETAIL BREAKDOWN SEE FIGURE 6
-39	8259506	1	.BOARD ASSEMBLY-SEGMENT
-40	1621191	3	.SCREW
-41	1623346	2	.WASHER
-42	5420242	1	.TY-WRAP
-43	676748	1	.JUMPER
-44	1621190	1	.SCREW
-45	1622346	1	.WASHER
-46	No PN	AR	.FILE MOUNTING KIT
-47	1616060	1	.FILE-60 MB
-47	1616513	1	.FILE-15 MB
-47	1616514	1	.FILE-30 MB FOR DETAIL BREAKDOWN SEE FIGURE 5
-48	2277579	1	.MOUNT
-49	5420242	1	.TY-WRAP
-50	1621190	1	.SCREW
-51	4240516	1	.DISKETTE DRIVE ASSEMBLY- 100/127 V,60 HZ
-51	4240512	1	.DISKETTE DRIVE ASSEMBLY- 100/127 V,50 HZ
-51	4240513	1	.DISKETTE DRIVE ASSEMBLY- 200/240 V,50 HZ
-51A	4240728	1	.FILE CARD
-52	6018808	2	.SCREW
-53	1621190	2	.SCREW
-54	6018791	1	.BRACKET
-55	1621190	4	.SCREW
-56	1616514	1	.FILE-30 MB
-56	1616060	1	.FILE-60 MB FOR DETAIL BREAKDOWN SEE FIGURE 5
-57	1621813	3	.SCREW
-58	4233751	1	.CLIP
-59	4423063	1	.CLAMP
-60	8583326	1	.RETAINER-CARD
-61	1621190	1	.SCREW
-62	6096879	1	.CARD RETAINER
-63	1621191	1	.SCREW
-64	8583327	1	.RETAINER-CONNECTOR
-65	1621190	2	.SCREW
-66	8259532	1	.CONNECTOR ASSEMBLY
-67	2372235	1	..JUMPER ASSEMBLY
-68	2732338	1	..CONNECTOR
-69	2732342	1	..SHROUD-LATCHING
-70	8583328	1	.CABLE
-71	8259528	1	.CABLE
-72	8259530	1	.CABLE
-73	8583329	1	.CABLE
-74	8259526	1	.CABLE-D.C. POWER
-75	8259527	1	.CABLE-INDICATOR CARD
-76	8259498	1	.CABLE

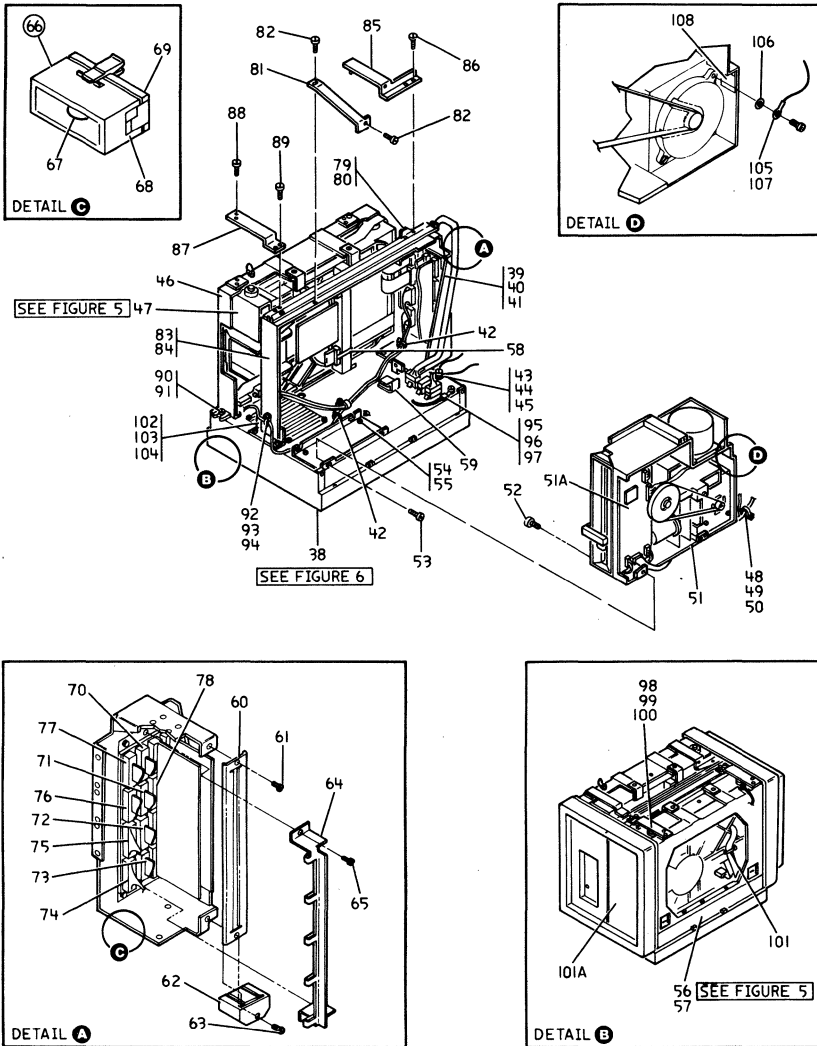


Figure 3. DISK EXPANSION UNIT (3 of 3)

FIGURE INDEX	PART NUMBER	UNITS	DESCRIPTION
3-77	8259498	1	.CABLE CABLES CAN BE TRACED FROM LOCATIONS INDICATED BY INDEX NOS. 70-77
-78	6096880	1	.CAPACITOR ASSEMBLY- MOUNTS TO BACK OF CONNECTOR
-79	6018736	1	.TIE BAR
-80	1621190	1	.SCREW
-81	6018785	1	.BRACKET
-82	1621190	2	.SCREW
-83	8583312	1	.BRACKET
-84	1621190	4	.SCREW
-85	8259507	1	.SUPPORT
-86	1621190	2	.SCREW
-87	8583313	1	.BRACKET
-88	1621308	2	.SCREW
-89	1621190	2	.SCREW
-90	1621813	3	.SCREW
-91	1622304	1	.WASHER
-92	2277579	2	.MOUNT
-93	1621190	1	.SCREW
-94	5420242	2	.TY-WRAP
-95	8709180	1	.GROUND-STRAP
-96	1621190	1	.SCREW
-97	1622346	1	.LOCKWASHER
-98	8583313	2	.BRACKET
-99	1621308	4	.SCREW
-100	1621190	4	.SCREW
-101	5420242	1	.TY-WRAP
-101A	8259573	1	.PANEL
-102	6066877	1	.JUMPER
-103	1621190	1	.SCREW
-104	1622346	1	.LOCKWASHER
-105	8709180	1	.GROUND STRAP
-106	1622346	1	.LOCKWASHER
-107	1159519	1	.TY-WRAP
-108	5865679	1	.LABEL

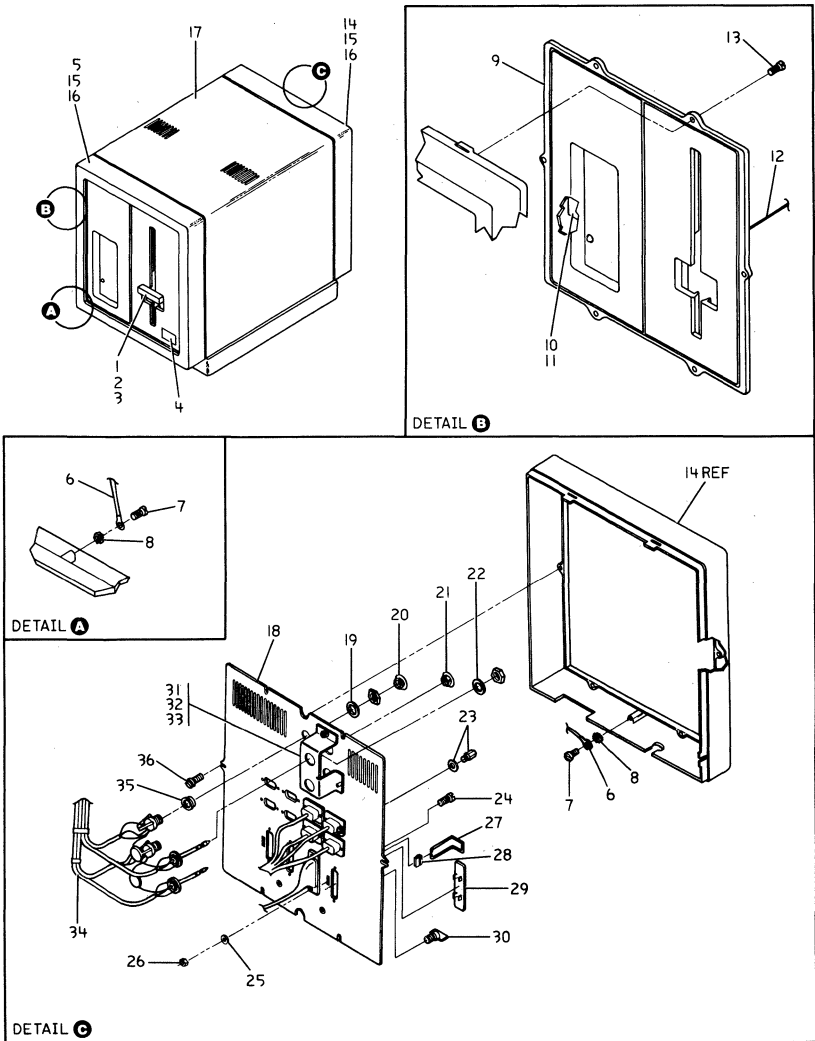


Figure 4. COMMUNICATIONS EXPANSION UNIT (1 of 3)

FIGURE INDEX	PART NUMBER	UNITS	DESCRIPTION
4-	8588741	NP	COMMUNICATIONS EXPANSION UNIT FOR ILLUSTRATION SEE FIGURE 4
-1	6842908	1	.LATCH ASSEMBLY
-2	1621182	1	.SCREW
-3	1622402	1	.NUT
-4	8588570	1	.LABEL-LOGO,4
-5	6018842	1	.BEZEL-FRONT
-6	6096877	2	.JUMPER ASSEMBLY
-7	1621190	2	.SCREW
-8	1622346	2	.LOCKWASHER
-9	8259524	1	.PANEL-FRONT,1.0 MB MACHINES
-9	8259523	1	.PANEL-FRONT,15,30 MB MACHINES AND NO FILE MACHINES
-10	No PN	1	.INDICATOR CARD
-11	1621851	2	.SCREW
-12	8588725	1	.CABLE ASSEMBLY-WITH B-LOOPS
-12	8588740	1	.CABLE ASSEMBLY-NO B-LOOPS
-13	1621192	6	.SCREW
-14	8583332	1	.BEZEL
-15	1621190	4	.SCREW
-16	1622346	4	.LOCKWASHER
-17	6096871	1	.COVER
-18	8588712	1	.PLATE-REAR MOUNTING
-19	2133437	2	.WASHER
-20	6018797	2	.PLUG
-21	6018798	2	.PLUG
-22	528356	2	.LOCKWASHER
-23	4405859	4	.MOUNTING KIT
-24	1621170	2	.SCREW
-25	1622344	2	.LOCKWASHER
-26	1622401	2	.NUT
-27	6096873	1	.CLIP
-28	5718360	1	.BAIL
-29	5680978	8	.PLUG
-30	5267844	1	.STUD
-31	8588713	1	.BRACKET
-32	1622346	2	.LOCKWASHER
-33	1622403	2	.NUT
-34	8588725	1	.CABLE ASSEMBLY
-35	2263808	2	.WASHER
-36	1621197	6	.SCREW

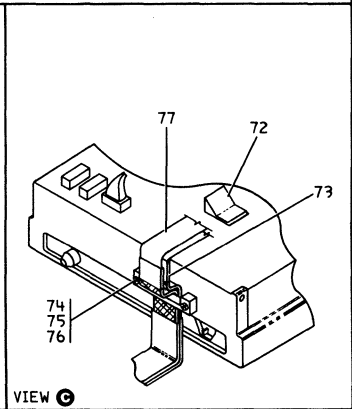
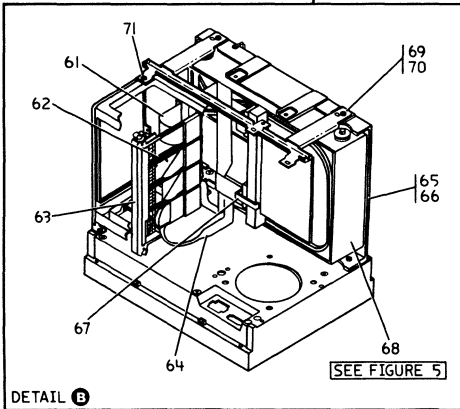
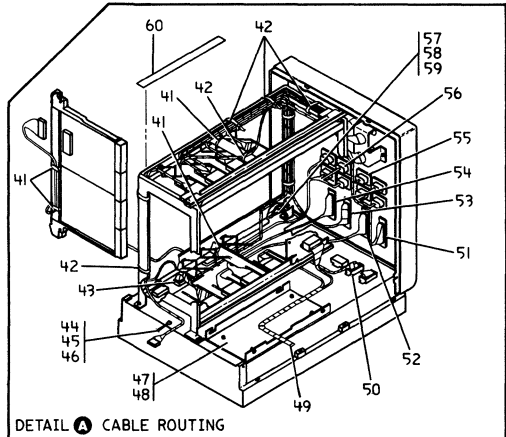
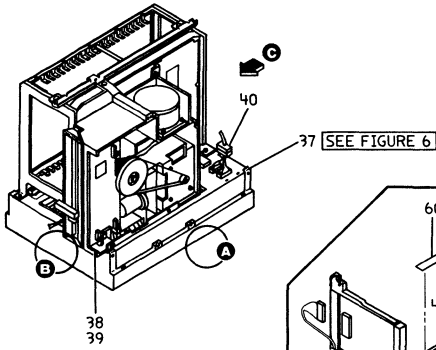


Figure 4. COMMUNICATIONS EXPANSION UNIT (2 of 3)

FIGURE INDEX	PART NUMBER	UNITS	DESCRIPTION
4-37	8259487	1	.BASE ASSEMBLY-100/127 V,50/60 HZ
-37	8259488	1	.BASE ASSEMBLY-100/127 V,50 HZ FOR DETAIL BREAKDOWN SEE FIGURE 6
-38	4240516	1	.FILE-100/127 V,60 HZ-1 MB
-38	4240512	1	.FILE-100/127 V,50 HZ-1 MB
-38	4240513	1	.FILE-200/240 V,50 HZ-1 MB
-39	1621190	4	.SCREW
-40	8259531	1	.CABLE ASSEMBLY-200/240 V,50 HZ
-40	8259547	1	.CABLE ASSEMBLY-100/127 V,50/60 HZ
-41	5420242	4	.TY-WRAP
-42	1159519	7	.STRAP
-43	8588719	1	.CABLE ASSEMBLY-TO LOGIC BOARD Y1 AND Z4
-44	6096877	Ref	.JUMPER ASSEMBLY
-45	1621190	1	.SCREW
-46	1622346	1	.LOCKWASHER
-47	6018791	1	.BRACKET
-48	1621190	4	.SCREW
-49	8588718	1	.CABLE ASSEMBLY-TO LOGIC BOARD Z1
-50	8588736	1	.CABLE ASSEMBLY
-51	8588723	1	.CABLE ASSEMBLY-TO LOGIC BOARD Y3
-52	8588720	1	.CABLE ASSEMBLY-TO LOGIC BOARD Z3
-53	8588722	1	.CABLE ASSEMBLY-TO LOGIC BOARD Y2
-54	8588721	1	.CABLE ASSEMBLY-TO LOGIC BOARD Z2
-55	8588724	1	.CABLE ASSEMBLY-TO LOGIC BOARD Y3
-56	8588729	1	.CABLE ASSEMBLY-TO FANOUT ADAPTER CARD
-57	6096877	Ref	.JUMPER ASSEMBLY
-58	1621190	1	.SCREW
-59	1622346	1	.LOCKWASHER
-60	6096896	1	.LABEL
-61	8588739	1	.CABLE ASSEMBLY-TO 1A12
-62	7389284	3	.HOLDER
-63	8588716	1	.RETAINER
-64	8588730	1	.CABLE ASSEMBLY-TO 1A15
-65	8259494	1	.FILE MOUNTING KIT
-66	1621813	3	.SCREW
-67	4233751	1	.CLIP
-68	1616513	1	.FILE-15 MB
-68	1616514	1	.FILE-30 MB FOR DETAIL BREAKDOWN SEE FIGURE 5
-69	8588714	1	.TIE BAR-15 AND 30 MB FILE ONLY
-70	1621190	4	.SCREW
-71	1621851	Ref	.SCREW
-72	4423063	1	.CLAMP
-73	8588738	1	.CABLE ASSEMBLY-TO 1A14
-74	8583325	1	.CLAMP
-75	1621194	2	.SCREW
-76	1622346	2	.LOCKWASHER
-77	8588737	1	.CABLE ASSEMBLY-TO 1A13

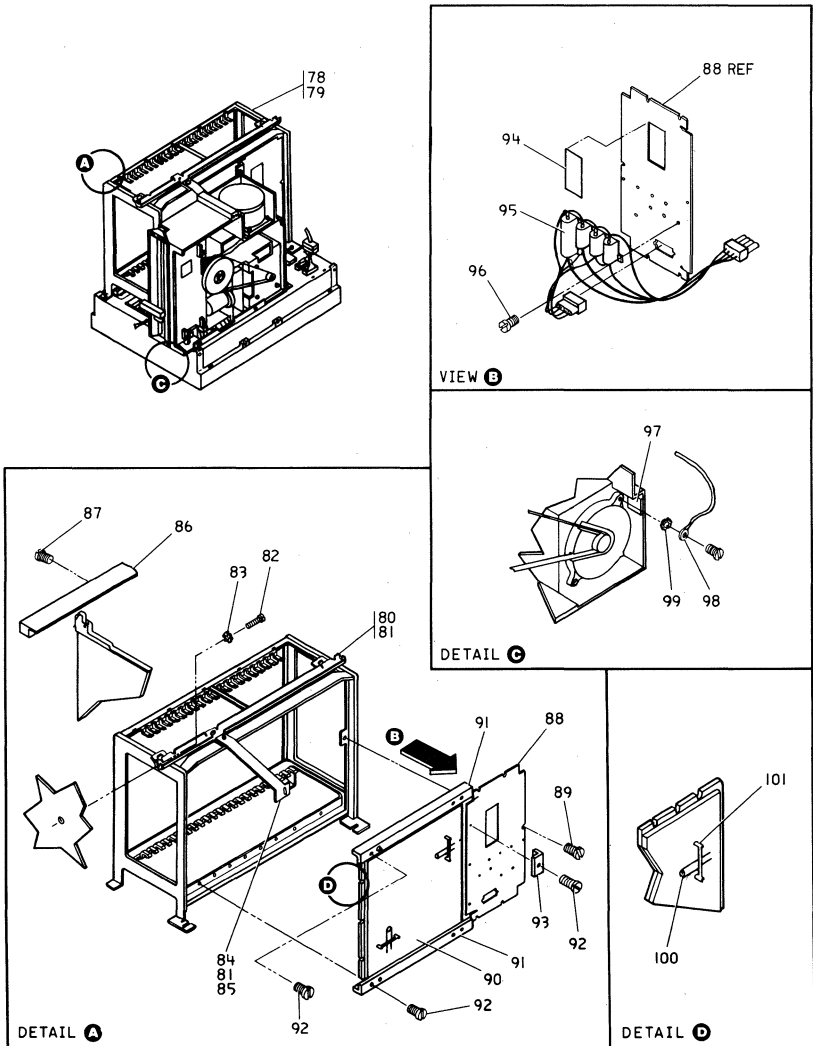


Figure 4. COMMUNICATIONS EXPANSION UNIT (3 of 3)

FIGURE INDEX	PART NUMBER	UNITS	DESCRIPTION
4-78	8588728	1	.GATE ASSEMBLY
-79	1621190	4	.SCREW
-80	8588715	1	.TIE BAR-1 MB FILE AND NO FILE ONLY
-81	1621851	4	.SCREW-1 MB FILE ONLY
-82	1621190	2	.SCREW
-83	1622346	2	.LOCKWASHER
-84	6018785	1	.BRACKET-1 MB FILE ONLY
-85	1621190	1	.SCREW-1 MB FILE ONLY
-86	5267932	2	.BRACKET ASSEMBLY
-87	5507392	6	.SCREW
-88	8588717	1	.PLATE
-89	1621844	5	.SCREW
-89	1625731	5	.SCREW-MANUFACTURING LOCATION 933
-90	No PN	1	.LOGIC BOARD
-91	8588742	2	.RETAINER
-92	2181088	8	.SCREW
-92	1625737	8	.SCREW-MANUFACTURING LOCATION 933
-92	2549562	8	.SCREW-MANUFACTURING LOCATION 947
-93	5241434	4	.RETAINER
-94	4420367	1	.LABEL-1 MB FILE AND NO FILE ONLY
-95	8588736	1	.CABLE ASSEMBLY
-96	1621846	8	.SCREW-1 MB FILE AND NO FILE ONLY
-97	5865679	1	.LABEL-1 MB FILE ONLY
-98	8709180	1	.GROUND STRAP
-99	1622346	1	.LOCKWASHER
-100	6096895	2	.CAPACITOR ASSEMBLY
-101	815080	2	.RETAINER

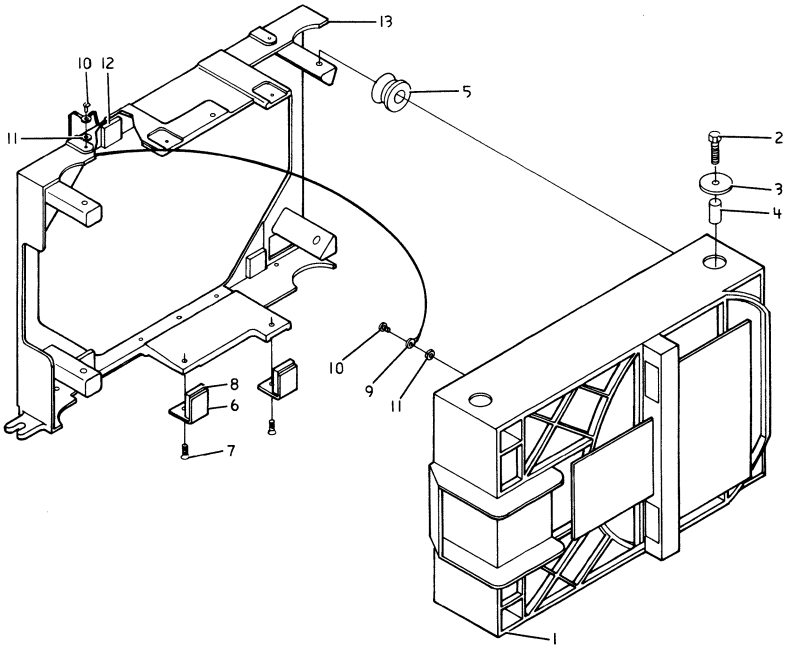


Figure 5. FIXED DISK MOUNTING ASSEMBLY

FIGURE INDEX	PART NUMBER	UNITS	DESCRIPTION
5-	No PN	Ref	FIXED DISK MOUNTING ASSEMBLY FOR NEXT HIGHER ASSEMBLY- SEE FIG. 3-47, 3-56 AND 4-68 FOR ILLUSTRATION-SEE FIG.5
-1	1616513	1	.FILE-FIXED DISK-15 MB
-1	1616514	1	.FILE-FIXED DISK-30 MB
-1	1616060	1	.FILE-FIXED DISK-60 MB
-2	1621599	4	.SCREW
-3	1616732	4	.WASHER
-4	1616733	4	.SPACER
-5	1616580	4	.MOUNT
-6	6096883	4	.BRACKET
-7	1621308	4	.SCREW
-8	8259511	4	.PAD
-9	676748	1	.JUMPER ASSEMBLY
-10	1621190	2	.SCREW
-11	1622346	2	.WASHER
-12	8259511	4	.PAD
-13	6019073	1	.FRAME

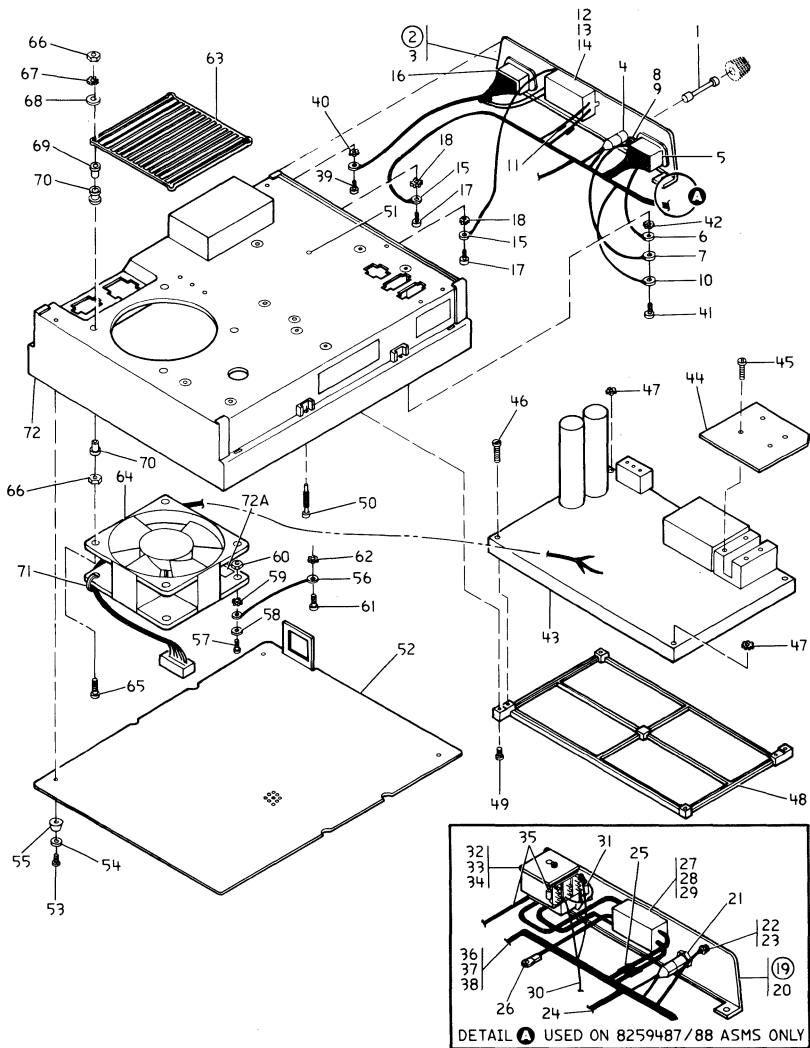


Figure 6. BASE ASSEMBLY (1 of 5)

FIGURE INDEX	PART NUMBER	UNITS	DESCRIPTION
6-	6018811	NP	BASE ASSEMBLY-100/127 V,60 HZ
-	6018812	NP	BASE ASSEMBLY-100/127 V,50 HZ
-	6018813	NP	BASE ASSEMBLY-200/240 V, 50 HZ USED ON MODELS 1,2 AND 5 ONLY
-	6125519	NP	BASE ASSEMBLY-100/127 V,60 HZ
-	6125520	NP	BASE ASSEMBLY-100/127 V,50 HZ
-	6125521	NP	BASE ASSEMBLY-200/240 V,50 HZ USED ON MODEL 3 ONLY FOR NEXT HIGHER ASSEMBLY SEE FIGURE 1-110
-	8259487	NP	BASE ASSEMBLY-100/127 V,50 OR 60 HZ
-	8259488	NP	BASE ASSEMBLY-200/240 V,50 HZ USED ON DEU AND CEU ONLY FOR NEXT HIGHER ASSEMBLY SEE FIGURE 3-38 AND 4-37 FOR ILLUSTRATION SEE FIGURE 6
-1	5718367	1	.FUSE-200/240 V,50 HZ
-1	512137	1	.FUSE-100/127 V,50 OR 60 HZ
-1	2768114	1	.FUSE-100/127 V,50 OR 60 HZ USED ON 8259487 BASE ASSEMBLY ONLY
-2	8588526	1	.PANEL ASSEMBLY-AC USED ON 6018811/12/13 AND 6125519/20/21 BASE ASSEMBLIES ONLY
-3	6018733	1	..PANEL-AC
-4	4201819	1	..FUSEHOLDER
-5	6018864	1	..RECEPTACLE-AC OUTPUT
-6	8259717	1	..JUMPER ASSEMBLY
-7	8259716	1	..JUMPER ASSEMBLY
-8	1622401	1	..NUT
-9	1622344	1	..LOCKWASHER
-10	8588525	1	..CABLE ASSEMBLY
-11	321051	2	..SPLICE
-12	5687676	1	..FILTER
-13	1622401	2	..NUT
-14	1622316	2	..LOCKWASHER
-15	483681	2	..TERMINAL
-16	6814345	1	..RECEPTACLE
-17	1621197	2	.SCREW USED ON 6018811/12/13 AND 6125519/20/21 BASE ASSEMBLIES ONLY
-17	1621190	1	.SCREW USED ON 8259487/88 BASE ASSEMBLIES ONLY
-18	1622346	2	.LOCKWASHER
-19	8259501	3	.PANEL ASSEMBLY-AC USED ON 8259487/88 BASE ASSEMBLIES ONLY
-20	8259504	1	..PANEL-AC
-21	4201819	1	..FUSEHOLDER
-22	1622401	1	..NUT
-23	1622344	1	..LOCKWASHER
-24	8259505	1	..CABLE ASSEMBLY-AC DISTRIBUTION

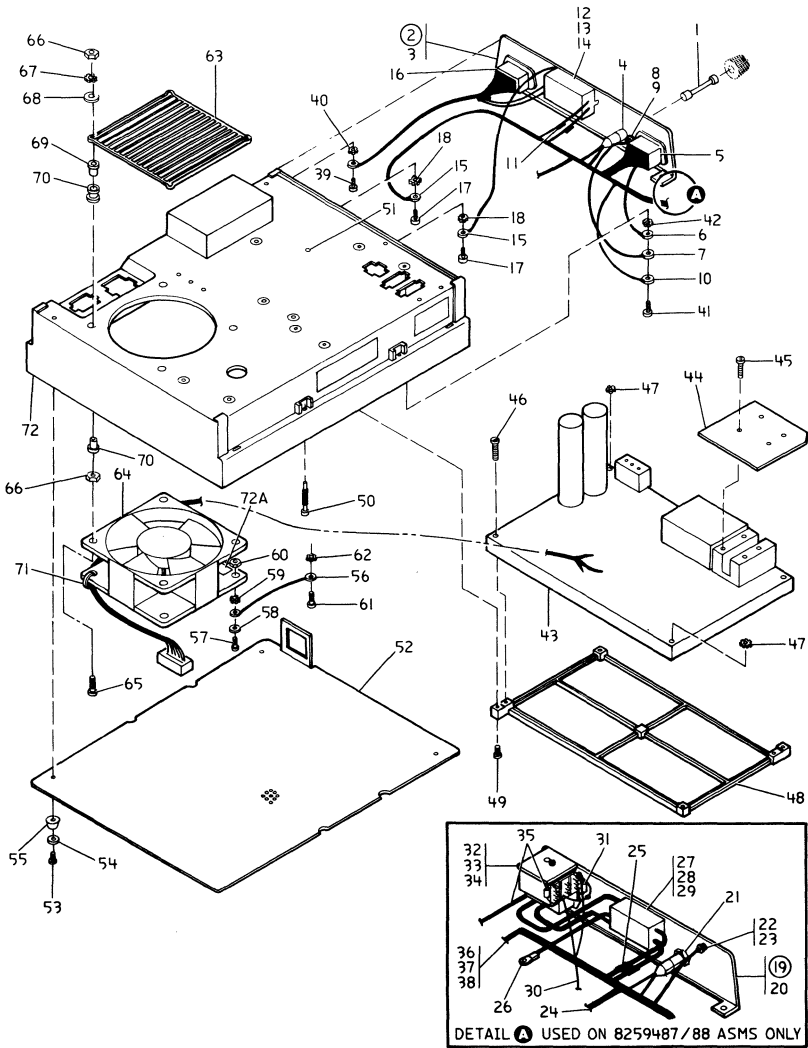


Figure 6. BASE ASSEMBLY (2 of 5)

FIGURE INDEX	PART NUMBER	UNITS	DESCRIPTION
6-25	321051	2	..SPLICE
-26	483681	1	..TERMINAL
-27	5687676	1	..FILTER
-28	1622401	2	..NUT
-29	1622316	2	..LOCKWASHER
-30	8583335	1	..CABLE ASSEMBLY- +24 V RETURN
-31	1152264	1	..SUPPRESSOR ASSEMBLY-R/C
-32	2242321	1	..RELAY (K1)
-33	81693	1	..SCREW
-34	6364	1	..LOCKWASHER
-35	8259717	1	..JUMPER ASSEMBLY
-36	6814345	1	..RECEPTACLE,AC IN
-37	1622401	2	..NUT
-38	1622316	2	..LOCKWASHER
-39	1621190	1	.SCREW
-40	1622346	1	.LOCKWASHER
-41	1621190	1	.SCREW
-42	1622346	1	.LOCKWASHER
-43	5699930	1	.POWER SUPPLY-100/127 V,60 HZ USED ON 6018811 AND 6125519 BASE ASSEMBLIES
-43	5699931	1	.POWER SUPPLY-100/127 V,50 HZ USED ON 6018812 AND 6125520 BASE ASSEMBLIES
-43	5699932	1	.POWER SUPPLY-200/240 V,50 HZ USED ON 6018813 AND 6125521 BASE ASSEMBLIES
-43	5643890	1	.POWER SUPPLY-100/127 V,50/60 HZ USED ON 8259487 BASE ASSEMBLY
-43	5643891	1	.POWER SUPPLY-200/240 V,50 HZ USED ON 8259488 BASE ASSEMBLY
-44	6125530	1	.HEAT SINK-MODEL 3 ONLY
-45	832025	4	.SCREW-MODEL 3 ONLY
-46	1621852	2	.SCREW
-47	1622346	2	.LOCKWASHER
-48	6018790	1	.BRACKET-MOUNTING
-49	1621193	4	.SCREW
-50	6018795	2	.SCREW
-51	1624340	1	.SCREW (FARSIDE)
-52	6018792	1	.COVER
-53	1621512	4	.SCREW
-54	1091508	4	.WASHER
-55	1561396	4	.FOOT
-56	2159768	1	.JUMPER
-57	1621173	1	.SCREW USED ON 6018811/12/13 AND 6125519/20/21 BASE ASSEMBLIES
-57	1621193	1	.SCREW USED ON 8259487/88 BASE ASSEMBLIES
-58	1622304	1	.WASHER USED ON 6018811/12/13 AND 6125519/20/21 BASE ASSEMBLIES ONLY

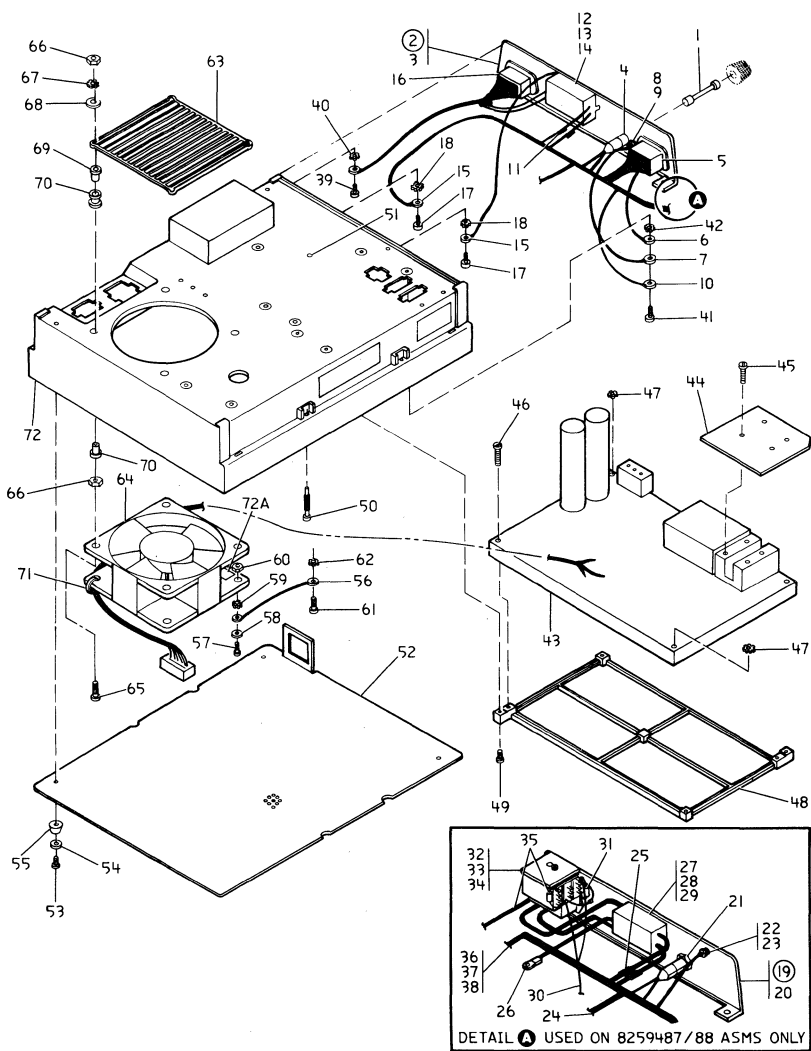


Figure 6. BASE ASSEMBLY (3 of 5)

FIGURE INDEX	PART NUMBER	UNITS	DESCRIPTION
6-59	1622344	1	.LOCKWASHER USED ON 6018811/12/13 AND 6125519/20/21 BASE ASSEMBLIES
-59	1622346	1	.LOCKWASHER USED ON 8259487/88 BASE ASSEMBLIES
-60	1622401	1	.NUT USED ON 6018811/12/13 AND 6125519/20/21 BASE ASSEMBLIES
-60	1622403	1	.NUT USED ON 8259487/88 BASE ASSEMBLIES
-61	1621190	1	.SCREW
-62	1622346	1	.LOCKWASHER
-63	177946	1	.GRILL
-64	4109480	1	.FAN-200/240 V,50 HZ
-64	4406538	1	.FAN-100/120 V,50 OR 60 HZ
-65	1621026	2	.SCREW
-66	1622401	4	.NUT
-67	1622344	2	.LOCKWASHER USED ON 8259487/88 BASE ASSEMBLIES ONLY
-68	1622304	2	.WASHER
-69	21200	4	.BUSHING
-70	797800	4	.GROMMET
-71	5420242	5	.TY-STRAP
-72	6018777	1	.POWER TUB USED ON MODELS 1,2,3 AND 5
-72	8583333	1	.POWER TUB USED ON DEU AND CEU ONLY
-72A	5865679	1	.LABEL USED ON 8259487/88 BASE ASSEMBLIES ONLY

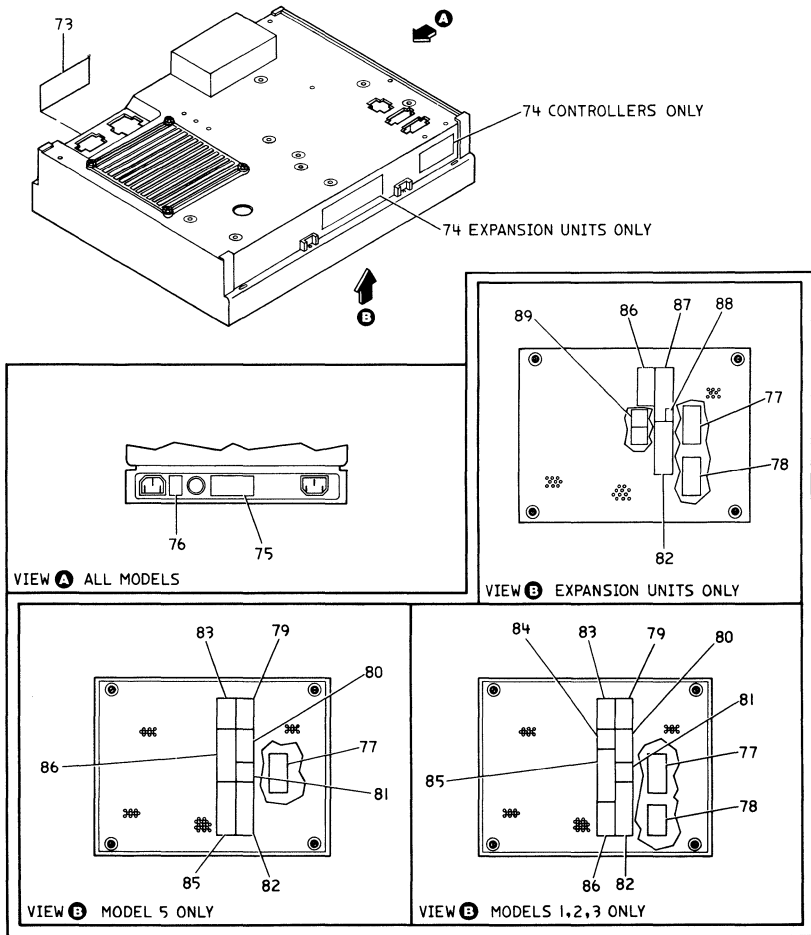


Figure 6. BASE ASSEMBLY (4 of 5)

FIGURE INDEX	PART NUMBER	UNITS	DESCRIPTION
6-73	138754	1	.LABEL-LINE VOLT PRESENT-ENGLISH
-73	6815187	1	.LABEL-LINE VOLT PRESENT-FRENCH
-73	6815194	1	.LABEL-LINE VOLT PRESENT-GERMAN
-73	6815185	1	.LABEL-LINE VOLT PRESENT-SPANISH
-73	6815186	1	.LABEL-LINE VOLT PRESENT-ITALIAN
-73	6815188	1	.LABEL-LINE VOLT PRESENT-PORTUGUESE
-73	6825840	1	.LABEL-LINE VOLT PRESENT-JAPANESE
-73	984147	1	.LABEL-LINE VOLT PRESENT-CANADIAN FRENCH
-73	5685243	1	.LABEL-LINE VOLT PRESENT-DUTCH/FRENCH
-73	6825818	1	.LABEL-LINE VOLT PRESENT-FINNISH
-73	4801513	1	.LABEL-LINE VOLT PRESENT-NORWEGIAN
-73	4945788	1	.LABEL-LINE VOLT PRESENT-SWEDISH
-73	2335764	1	.LABEL-LINE VOLT PRESENT-DANISH
-74	369207	1	.LABEL-HAZARDOUS AREA-ENGLISH/DANISH
-74	1743548	1	.LABEL-HAZARDOUS AREA-CANADIAN FRENCH
-74	6815182	1	.LABEL-HAZARDOUS AREA-FRENCH
-74	6815193	1	.LABEL-HAZARDOUS AREA-GERMAN
-74	6815183	1	.LABEL-HAZARDOUS AREA-PORTUGUESE
-74	6815181	1	.LABEL-HAZARDOUS AREA-ITALIAN
-74	8326797	1	.LABEL-HAZARDOUS AREA-JAPANESE
-74	5685244	1	.LABEL-HAZARDOUS AREA-DUTCH/FRENCH
-74	8326801	1	.LABEL-HAZARDOUS AREA-FINNISH
-74	4945863	1	.LABEL-HAZARDOUS AREA-NORWEGIAN
-74	6815180	1	.LABEL-HAZARDOUS AREA-SPANISH
-74	4945811	1	.LABEL-HAZARDOUS AREA-SWEDISH
-75	5718483	1	.LABEL-WARNING-CANADIAN FRENCH
-75	4942502	1	.LABEL-WARNING-ENGLISH
-75	4406244	1	.LABEL-WARNING-JAPANESE
-75	8259714	1	.LABEL-WARNING-PTT GERMANY
-76	6019097	1	.LABEL-200/240 V,50 HZ
-76	6018729	1	.LABEL-100/127 V,50 OR 60 HZ
-77	2624998	1	.LABEL-2 MIN. WARNING-ENGLISH
-77	8259690	1	.LABEL-2 MIN. WARNING-SPANISH
-77	8259691	1	.LABEL-2 MIN. WARNING-NORWEGIAN
-77	8259692	1	.LABEL-2 MIN. WARNING-CANADIAN FRENCH
-77	8259693	1	.LABEL-2 MIN. WARNING-FRENCH
-77	8259694	1	.LABEL-2 MIN. WARNING-GERMAN
-77	8259695	1	.LABEL-2 MIN. WARNING-ITALIAN
-77	8259696	1	.LABEL-2 MIN. WARNING-JAPANESE
-77	8259697	1	.LABEL-2 MIN. WARNING-PORTUGUESE
-77	8259698	1	.LABEL-2 MIN. WARNING-DUTCH/FRENCH
-77	8259699	1	.LABEL-2 MIN. WARNING-FINNISH
-77	8259700	1	.LABEL-2 MIN. WARNING-SWEDISH
-77	8259705	1	.LABEL-2 MIN. WARNING-DANISH
-78	4942502	1	.LABEL

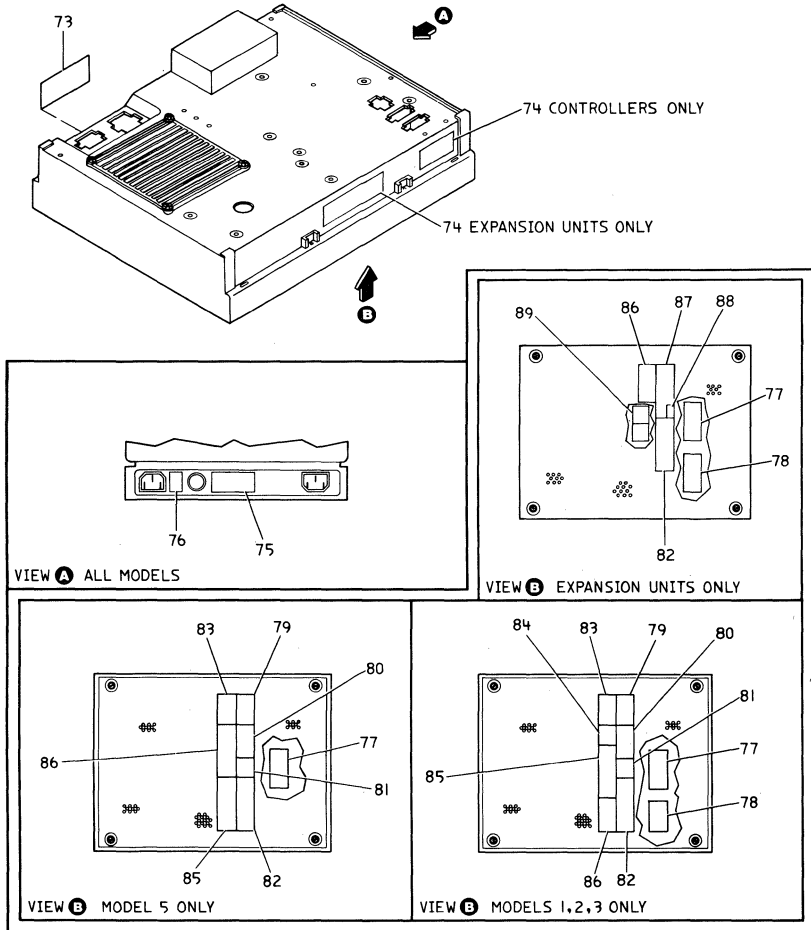


Figure 6. BASE ASSEMBLY (5 of 5)

FIGURE INDEX	PART NUMBER	UNITS	DESCRIPTION
6-79	855262	1	.LABEL-PROPERTY OF PLATE
-79	855263	1	.LABEL-PROPERTY OF PLATE
-79	960746	1	.LABEL-PROPERTY OF PLATE
-79	855264	1	.LABEL-MANUFACTURED BY PLATE
-79	855265	1	.LABEL-MANUFACTURED BY PLATE
-79	855266	1	.LABEL-MANUFACTURED BY PLATE
-79	855267	1	.LABEL-MANUFACTURED FOR PLATE
-79	855268	1	.LABEL-MANUFACTURED FOR PLATE
-79	855269	1	.LABEL-MANUFACTURED FOR PLATE
-79	855270	1	.LABEL-RECONDITIONED BY PLATE
-79	855272	1	.LABEL-RECONDITIONED BY PLATE
-79	855273	1	.LABEL-RENOVATED BY PLATE
-79	855275	1	.LABEL-RENOVATED BY PLATE
-79	855276	1	.LABEL-RECONDITIONED FOR PLATE
-79	855278	1	.LABEL-RECONDITIONED FOR PLATE
-79	855279	1	.LABEL-RENOVATED FOR PLATE
-79	855281	1	.LABEL-RENOVATED FOR PLATE
-80	855282	1	.LABEL-SERIAL NUMBER PLATE-L.H.
-81	855283	1	.LABEL-SERIAL NUMBER PLATE-R.H.
-82	6019067	1	.POWER RATING PLATE
-82	8583314	1	.POWER RATING PLATE-60 HZ,100/120 V
-82	8583315	1	.POWER RATING PLATE-50 HZ,100/110 V
-82	8583316	1	.POWER RATING PLATE-50 HZ,200/240 V
-83	855284	1	.LABEL-MANUFACTURING EXPORT PLATE
-83	8112300	1	.LABEL-MANUFACTURING EXPORT PLATE-U.K.
-83	8112496	1	.LABEL-MANUFACTURING EXPORT PLATE-U.K.
-84	960766	1	.LABEL-CSA PLATE (CANADA ONLY)
-84	855286	1	.LABEL-UL PLATE (USA ONLY)
-85	5118178	1	.LABEL-IMPORT-U.K.
-85	855285	1	.LABEL-IMPORT-U.K.
-85	8112301	1	.LABEL-TRADEMARK PLATE-GUATAMALA,U.K.
-85	8112302	1	.LABEL-TRADEMARK PLATE-CHILE,MEXICO, PERU,U.K.
-86	4447204	1	.LABEL-FCC-USA ONLY
-86	8249714	1	.LABEL-PTT,GERMANY
-87	6019241	1	.LABEL-USED ON EXPANSION UNITS ONLY
-88	6196506	1	.LABEL-USED ON EXPANSION UNITS ONLY
-89	4420781	1	.LABEL

CABLE ASSEMBLIES AND COMPONENT PARTS

FIGURE INDEX	PART NUMBER	UNITS	DESCRIPTION
7-A	6018759	1	CABLE ASSEMBLY-2 LOOPS FOR COMPONENT PARTS SEE INDEX NOS. 1B,4,23A,24,26,30,31,33,36,37,38
-A	6018762	1	CABLE ASSEMBLY-DC & SIGNAL TO AUX FILE FOR COMPONENT PARTS SEE INDEX NOS. 7A,8,19,36,37,38,41
-B	6018763	1	CABLE ASSEMBLY-DC TO LOGIC BOARD FOR COMPONENT PARTS SEE INDEX NOS. 7,7A,22,32,36,37
-B	6018766	1	CABLE ASSEMBLY-DCA TO LOGIC BOARD FOR COMPONENT PARTS SEE INDEX NOS. 1,1A,2,23A,24,27,36,37,38
-C	6018767	1	CABLE ASSEMBLY-EIA TO LOGIC BOARD FOR COMPONENT PARTS SEE INDEX NOS. 9,10,36,37,38
-C	6018768	1	CABLE ASSEMBLY-SNAP TO LOGIC BOARD FOR COMPONENT PARTS SEE INDEX NOS. 10,36,37,38,44
-D	6018769	1	CABLE ASSEMBLY-KEY LOCK FOR COMPONENT PARTS SEE INDEX NOS. 15,25,26,34
-D	6018770	1	CABLE ASSEMBLY-SIGNAL TO FILE FOR COMPONENT PARTS SEE INDEX NOS. 3A,10,23A,24,42,43,45,46,47
-E	6018771	1	CABLE ASSEMBLY-AC TO FAN & FILE FOR COMPONENT PARTS SEE INDEX NOS. 1,3,7,7A,21
-E	6019012	1	CABLE ASSEMBLY-SIGNAL TO PRIMARY FILE FOR COMPONENT PARTS SEE INDEX NOS. 7A,19,23A,24,36,37,38,47
-F	6019037	1	CABLE ASSEMBLY-B LOOP FOR COMPONENT PARTS SEE INDEX NOS. 1B,4,23A,24,26,30,31,33,36,37,38
-F	6096634	1	CABLE ASSEMBLY-DCA TO LOGIC BOARD MODEL 2SE ONLY FOR COMPONENT PARTS SEE INDEX NOS. 7,7A,22,25,28,32,36,37,53,53A,54
-G	8259509	1	CABLE ASSEMBLY-DC/SIGNAL FOR COMPONENT PARTS SEE INDEX NOS. 3A,10,23A,24,42,45,46,47
-G	8259526	1	CABLE ASSEMBLY-DC TO SEG BOARD FOR COMPONENT PARTS SEE INDEX NOS. 3A,5,7A,12,13,14,18,22
-H	8259527	1	CABLE ASSEMBLY-INDICATOR PANEL FOR COMPONENT PARTS SEE INDEX NOS. 1,6,11,23,23A,28,29,35,40
-H	8259547	1	CABLE ASSEMBLY-AC,DISK EXPANSION UNIT FOR COMPONENT PARTS SEE INDEX NOS. 7A,17,19,21

Figure 7. CABLE ASSEMBLIES AND COMPONENT PARTS (1 of 5)

FIGURE INDEX	PART NUMBER	UNITS	DESCRIPTION
7-J	8259721	1	CABLE ASSEMBLY-ALA TO LOGIC BOARD FOR COMPONENT PARTS SEE INDEX NOS. 9,10,36,37,38
-J	8588525	1	CABLE ASSEMBLY-AC DISTRIBUTION FOR COMPONENT PARTS SEE INDEX NOS. 1,3,7,7A,18,20,21,39
-K	8583363	1	CABLE ASSEMBLY-LOOP
-K	5640660	1	LINE CORD-W/O PLUG,6A/250 V W.T.C.
-L	5640661	1	LINE CORD ASSEMBLY-6A/250 V-BELGIUM, MALAYSIA,ALGERIA,HUNGARY,FRANCE
-L	5640662	1	LINE CORD-5A/250 V-UNITED KINGDOM FOR COMPONENT PARTS SEE INDEX NOS. 48
-M	5640663	1	LINE CORD-6A/250 V-FINLAND,GERMANY, YUGOSLAVIA,NORWAY,SWEDEN,AUSTRIA, SPAIN,INDONEXIA,IRAN,BULGARIA, PORTUGAL,ICELAND,POLAND,RUMANIA
-M	5640664	1	LINE CORD-6A/250 V-AUSTRALIA,ARGENTINA, CHILE,COLUMBIA,PARAGUAY,VENEZUELA, URUGUAY,NEW ZEALAND
-N	5640665	1	LINE CORD-6A/250 V-SWITZERLAND
-N	5640666	1	LINE CORD-5A/250 V-SOUTH AFRICA FOR COMPONENT PARTS SEE INDEX NOS. 48
-P	5640667	1	LINE CORD-6A/250 V-DENMARK FOR COMPONENT PARTS SEE INDEX NOS. 50
-P	5640668	1	LINE CORD-6A/250 V-ITALY
-R	5640672	1	LINE CORD-6A/250 V-ISRAEL FOR COMPONENT PARTS SEE INDEX NOS. 51
-R	5641082	1	LINE CORD-NETHERLANDS
-S	8248352	1	LINE CORD-SHIELEDDED,6A/250 V-W/O PLUG
-S	8248354	1	LINE CORD-SHIELEDDED,6A/250 V-USA
-T	8248355	1	LINE CORD-125 V,60 HZ-CANADA FOR COMPONENT PARTS SEE INDEX NOS. 49
-T	8248356	1	LINE CORD-SHIELEDDED,6A/250 V-CANADA, JAPAN
-U	8248359	1	LINE CORD-LOCK,6A/250 V-JAPAN FOR COMPONENT PARTS SEE INDEX NOS. 52
-U	8248360	1	LINE CORD-SHIELEDDED,6A/250 V-W/O PLUG
-V	8248364	1	LINE CORD-TWIST LOCK,125 V,60 HZ FOR COMPONENT PARTS SEE INDEX NOS. 49

Figure 7. CABLE ASSEMBLIES AND COMPONENT PARTS (2 of 5)

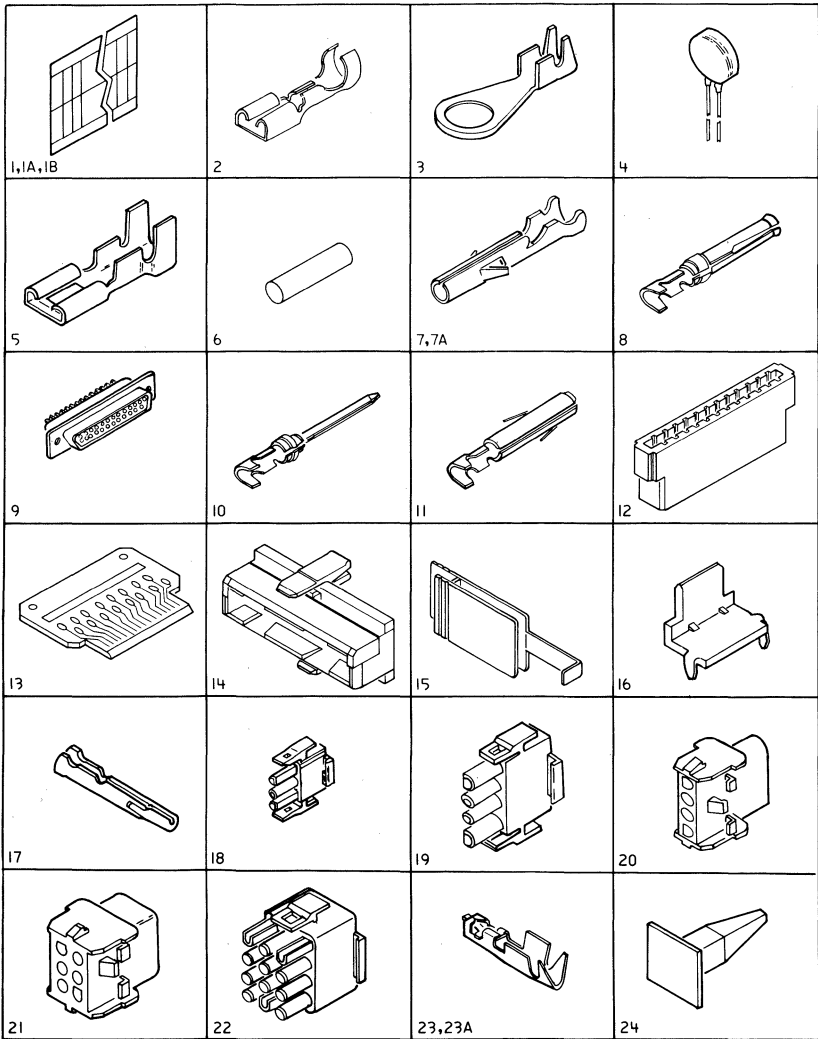


Figure 7. CABLE ASSEMBLIES AND COMPONENT PARTS (3 of 5)

FIGURE INDEX	PART NUMBER	UNITS	DESCRIPTION
7-1	317296	1	.LABEL
-1A	598381	1	.LABEL
-1B	811825	1	.LABEL
-2	430798	1	.TERMINAL SLIP-ON
-3	483681	1	.TERMINAL-RING TONGUE
-3A	483682	1	.TERMINAL-RING TONGUE
-4	737805	1	.CAPACITOR .01 UF
-5	1127037	1	.TERMINAL
-6	1354851	1	.LOCKING ROD
-7	1471028	1	.TERMINAL-SOCKET
-7A	1847521	1	.TERMINAL-SOCKET
-8	1655337	1	.TERMINAL-SOCKET
-9	1655338	1	.CONN. 25 POSITION
-10	1655339	1	.TERMINAL PIN
-11	1661132	1	.TERMINAL
-12	1743047	1	.CONN. CARD
-13	1743049	1	.CARD ASSEMBLY
-14	1743052	1	.LATCH
-15	1753055	1	.STRAIN RELIEF
-16	1768026	1	.TERMINAL
-17	1847520	1	.PIN
-18	1847526	1	.TERMINAL
-19	1847528	1	.CONN. 4 POSITION
-20	1847529	1	.RECEPTACLE-4 POSITION
-21	1847531	1	.RECEPTACLE-6 POSITION
-22	1847534	1	.CONN.-PLUG 12 POSITION
-23	2637681	1	.TERMINAL
-23A	2637682	1	.SOCKET
-24	2637689	1	.INSERT,KEY

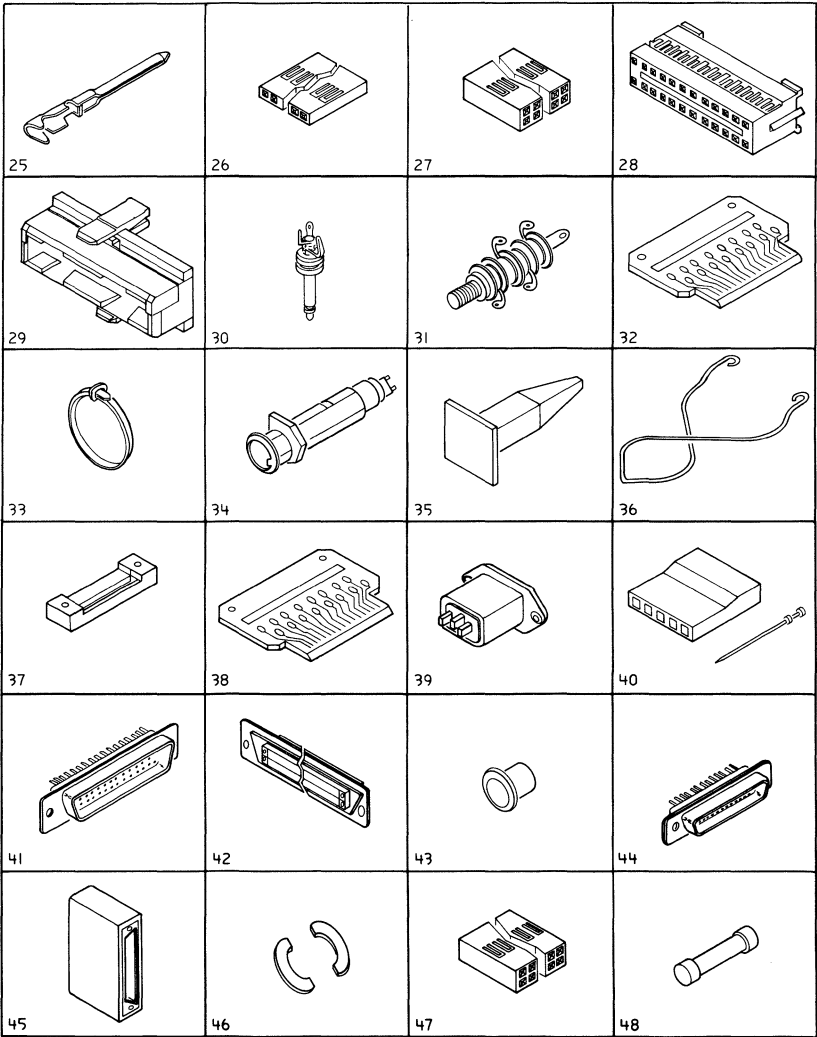


Figure 7. CABLE ASSEMBLIES AND COMPONENT PARTS (4 of 5)

FIGURE INDEX	PART NUMBER	UNITS	DESCRIPTION
7-25	2731384	1	.PIN
-26	2731731	1	.HOUSING 1 X 6
-27	2731847	1	.HOUSING 2 X 16
-28	2732338	1	.CONNECTOR
-29	2732342	1	.LATCHING SHROUD
-30	5252767	1	.PLUG
-31	5252916	1	.JACK,SHORTING
-32	5267723	1	.CARD
-33	5420242	1	.TY-STRAP
-34	5680979	1	.SWITCH LOCK
-35	5681086	1	.KEY,LATCHING
-36	5717466	1	.RETAINER
-37	5717486	1	.RETAINER
-38	5800634	1	.CARD
-39	6018784	1	.RECEPTACLE-AC OUT
-40	5613119	1	.CONNECTOR,1 X 10 BERG
-41	6018799	1	.CONN. 37 POSITION
-42	6018801	1	.PLUG,37 POSITION
-43	6018817	1	.BUSHING
-44	6019297	1	.CONN. 9 POSITION
-45	6019428	1	.HOOD
-46	6019694	1	.RETAINER
-47	8324648	1	.HOUSING 2 X 18
-48	4422260	1	.FUSE

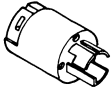
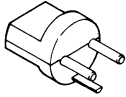
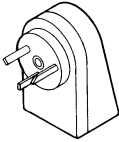


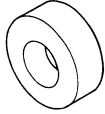
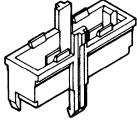
 <p>49</p>	 <p>50</p>	 <p>51</p>	 <p>52</p>
 <p>53</p>	 <p>54</p>	 <p>55</p>	

Figure 7. CABLE ASSEMBLIES AND COMPONENT PARTS (5 of 5)

FIGURE INDEX	PART NUMBER	UNITS	DESCRIPTION
7-49	1652410	1	.PLUG
-50	4409574	1	.PLUG
-51	6814300	1	.PLUG
-52	1975238	1	.PLUG
-53	216433	1	.RESISTOR-300 OHMS
-53A	216443	1	.RESISTOR-750 OHMS
-54	1566831	1	.CORE
-55	6019211	1	.SHROUD-LATCHING

THIS PAGE INTENTIONALLY LEFT BLANK

NUMERICAL INDEX

PART NUMBER	FIGURE INDEX	PART NUMBER	FIGURE INDEX	PART NUMBER	FIGURE INDEX	PART NUMBER	FIGURE INDEX
6364	1-93	855268	6-79	1621173	2-46	1621190	4-7
	6-34	855269	6-79		6-57		4-15
21200	2-54	855270	6-79	1621182	1-3		4-39
	6-69	855272	6-79		2-2		4-45
79780	2-55	855273	6-79		3-2		4-48
81693	6-33	855275	6-79		4-2		4-58
112628	1-55	855276	6-79	1621190	1-6		4-70
	1-79	855278	6-79		1-9		4-79
138754	6-73	855279	6-79		1-46		4-82
177946	2-49	855281	6-79		1-82		4-85
	6-63	855282	6-80		1-85		5-10
216433	7-53	855283	6-81		1-88		6-17
216443	7-53A	855284	6-83		1-108		6-39
257187	1-94	855285	6-85		1-115		6-41
317296	7-1	855286	6-84		1-117		6-61
321051	6-11	960746	6-79		1-124	1621191	3-18
	6-25	960766	6-84		2-5		3-40
369207	6-74	984147	6-73		2-8		3-63
430798	7-2	1091508	2-28		2-13	1621192	1-20
483681	6-15		6-54		2-14		1-27
	6-26	1127037	7-5		2-18		2-11
	7-3	1145574	3-20		2-21A		3-12
483682	7-3A	1152264	6-31		2-23		3-30
512137	6-1	1159519	1-21		2-31		4-13
528356	1-63		1-105		2-35	1621193	3-28
	4-22		1-127		2-38		6-49
598381	7-1A		2-36		2-40		6-57
676748	1-8		3-107		2-42	1621194	3-33
	1-45		4-42		2-45		4-75
	1-116	1354851	7-6		3-5	1621197	1-80
	1-123	1471028	7-7		3-7A		1-112
	2-4	1561396	2-29		3-13A		4-36
	2-41		6-55		3-15		6-17
	3-14	1566831	7-54		3-27	1621285	1-42
	3-43	1616060	3-47		3-37	1621308	3-88
	5-9		3-56		3-44		3-99
737805	7-4		5-1		3-50		5-7
797800	6-70	1616513	3-47		3-53	1621512	2-27
811825	7-1B		4-68		3-55		6-53
815080	1-96		5-1		3-61	1621599	5-2
	4-101	1616514	3-47		3-65	1621813	3-57
818579	1-23		3-56		3-80		3-90
	1-99		4-68		3-82		4-66
832025	6-45		5-1		3-84	1621844	4-89
855262	6-79	1616580	5-5		3-86	1621846	1-98
855263	6-79	1616732	5-3		3-89		4-96
855264	6-79	1616733	5-4		3-93	1621851	1-84
855265	6-79	1621026	2-51		3-96		1-87
855266	6-79		6-65		3-100		3-9
855267	6-79	1621170	4-24		3-103		4-11

PART NUMBER	FIGURE INDEX	PART NUMBER	FIGURE INDEX	PART NUMBER	FIGURE INDEX	PART NUMBER	FIGURE INDEX
1621851	4-71	1622346	6-18	1847531	7-21	4240516	4-38
	4-81		6-40	1847534	7-22	4240728	3-51A
1621852	6-46		6-42	1975238	7-52	4405859	1-40
1622304	2-47		6-47	2133437	1-65		4-23
	2-52		6-59		4-19	4406244	6-75
	3-91		6-62	2159768	2-44	4406538	6-64
	6-58	1622401	1-44		6-56	4409574	7-50
	6-68		1-50	2181088	1-90	4411361	2-39
1622316	6-14		2-48		1-92		3-36
	6-29		2-53		4-92	4420367	4-94
	6-38		4-26	2242321	6-32	4420781	6-89
1622344	1-43		6-8	2263808	1-64	4422260	7-48
	1-49		6-13		4-35	4423063	3-19A
	4-25		6-22	2277579	2-34		3-59
	6-9		6-28		3-23		4-72
	6-23		6-37		3-25	4447204	6-86
	6-59		6-60		3-48	4801513	6-73
	6-67		6-66		3-92	4942502	6-75
1622346	1-7	1622402	1-4	2335764	6-73		6-78
	1-10		2-3	2372235	3-67	4945788	6-73
	1-47		3-3	2549562	4-92	4945811	6-74
	1-56		4-3	2624998	6-77	4945863	6-74
	1-61	1622403	1-60	2637681	7-23	5118178	6-85
	1-74		1-75	2637682	7-23A	5213276	1-24
	1-104		4-33	2637689	7-24	5241434	1-91
	1-113		6-60	2731384	7-25		4-93
	1-118	1622850	1-52	2731731	7-26	5252767	7-30
	1-125		1-73	2731847	7-27	5252916	7-31
	2-6	1623346	3-41	2732338	3-68	5267709	1-33
	2-13A	1624340	6-51		7-28	5267723	7-32
	2-15	1625731	4-89	2732342	3-69	5267844	1-69
	2-32	1625737	4-92		7-29		4-30
	3-6	1652410	7-49	2768114	6-1	5267932	1-100
	3-7B	1655337	7-8	4109480	6-64		4-86
	3-13B	1655338	7-9	4176642	2-50	5404468	1-54
	3-16	1655339	7-10	4201819	6-4		1-78
	3-34	1661132	7-11		6-21	5420242	3-24
	3-45	1743001	1-122	4233751	3-58		3-26
	3-97	1743047	7-12		4-67		3-42
	3-104	1743049	7-13	4240512	1-134		3-49
	3-106	1743052	7-14		2-30A		3-94
	4-8	1743548	6-74		3-51		3-101
	4-16	1753055	7-15		4-38		4-41
	4-32	1768026	7-16	4240513	1-134		6-71
	4-46	1847520	7-17		2-30A		7-33
	4-59	1847521	7-7A		3-51	5507392	1-101
	4-76	1847526	7-18		4-38		4-87
	4-83	1847528	3-22	4240516	1-134	5613119	7-40
	4-99		7-19		2-30A	5640660	7-K
	5-11	1847529	7-20		3-51	5640661	7-L

PART NUMBER	FIGURE INDEX	PART NUMBER	FIGURE INDEX	PART NUMBER	FIGURE INDEX	PART NUMBER	FIGURE INDEX
5640662	7-L	6018757	1-83	6018807	1-129	6096877	4-44
5640663	7-M	6018759	1-129	6018808	1-109		4-57
5640664	7-M		7-A		3-52	6096878	1-48
5640665	7-N	6018762	1-38	6018809	1-1	6096879	3-62
5640666	7-N		1-106	6018811	1-110	6096880	3-78
5640667	7-P		7-A		6-	6096895	1-95
5640668	7-P	6018763	7-B	6018812	1-110		4-100
5640672	7-R	6018766	1-34		6-	6096896	4-60
5641082	7-R		7-B	6018813	1-110	6096904	1-59
5643890	6-43	6018767	1-70		6-	6096905	1-71
5643891	6-43		1-119	6018814	2-16	6096912	1-131
5680978	1-66		7-C	6018815	2-17	6096913	1-58
	4-29	6018768	1-39	6018817	2-33	6098783	3-3A
5680979	7-34		7-C		7-43	6098785	1-19
5681086	7-35	6018769	1-13	6018840	1-28	6098789	1-77
5685243	6-73		1-25		3-19	6108753	2-21
5685244	6-74		7-D	6018842	1-5	6125519	1-110
5687676	6-12	6018770	2-19		3-7		6-
	6-27		7-D		4-5	6125520	1-110
5699514	1-30	6018771	2-20	6018843	1-59		6-
5699930	6-43		7-E	6018846	1-1	6125521	1-110
5699931	6-43	6018773	2-	6018851	1-17		6-
5699932	6-43	6018776	1-22	6018855	1-57	6125522	1-
5699968	1-35	6018777	2-56	6018864	6-5	6125530	6-44
5717466	7-36		6-72	6019011	1-	6125583	1-57
5717486	7-37	6018778	1-18	6019012	1-107	6125584	1-57
5718360	1-36	6018779	1-15		1-130	6125591	1-31
	4-28	6018781	1-		7-E	6196506	2-24
5718367	6-1	6018784	7-39	6019017	1-97		6-88
5718378	1-128	6018785	1-86	6019027	1-1	6814300	7-51
5718483	6-75		3-81	6019036	1-57	6814345	6-16
5800634	7-38		4-84	6019037	7-F		6-36
5865679	1-102	6018787	1-29	6019067	6-82	6815180	6-74
	3-108	6018789	1-29	6019073	5-13	6815181	6-74
	4-97	6018790	6-48	6019097	6-76	6815182	6-74
	6-72A	6018791	1-114	6019211	7-55	6815183	6-74
5997533	1-132		2-37	6019241	2-25	6815185	6-73
6018729	6-76		3-54		6-87	6815186	6-73
6018732	2-26		4-47	6019297	7-44	6815187	6-73
6018733	6-3	6018792	2-30	6019419	2-9	6815188	6-73
6018736	2-12		6-52	6019428	7-45	6815193	6-74
	3-79	6018793	1-14	6019694	7-46	6815194	6-73
6018737	1-81	6018795	2-43	6066877	3-102	6825818	6-73
6018741	2-7		6-50	6096633	1-1	6825840	6-73
6018742	2-10	6018797	1-67	6096634	7-F	6837984	2-50
6018743	1-26		4-20	6096871	4-17	6842908	1-2
6018744	1-11	6018798	1-68	6096873	1-37		2-1
6018745	1-16		4-21		4-27		3-1
6018746	1-12	6018799	7-41	6096877	3-4		4-1
6018750	1-57	6018801	7-42		4-6	7389284	1-120

PART NUMBER	FIGURE INDEX	PART NUMBER	FIGURE INDEX	PART NUMBER	FIGURE INDEX	PART NUMBER	FIGURE INDEX
7389284	4-62	8259523	4-9	8583325	4-74	8709180	3-95
7389394	1-133	8259524	3-11	8583326	3-60		3-105
8112300	6-83		4-9	8583327	3-64		4-98
8112301	6-85	8259526	3-31	8583328	3-70		
8112302	6-85		3-74	8583329	3-73		
8112496	6-83		7-G	8583332	3-13		
8248352	7-S	8259527	3-10		4-14		
8248354	7-S		3-75	8583333	6-72		
8248355	7-T		7-H	8583335	6-30		
8248356	7-T	8259528	3-71	8583336	1-72		
8248359	7-U	8259530	3-72		1-121		
8248360	7-U	8259531	3-21	8583337	1-53		
8248364	7-V		4-40		1-76		
8249714	6-86	8259532	3-66	8583338	1-51		
8250000	1-58	8259546	3-21	8583339	1-48A		
8250001	1-58	8259547	3-21	8583363	7-K		
8250002	1-58		4-40	8588525	6-10		
8250003	1-58		7-H		7-J		
8250004	1-58	8259573	3-101A	8588526	6-2		
8250005	1-58	8259690	6-77	8588568	2-22		
8250006	1-57	8259691	6-77	8588570	3-3A		
8250007	1-57	8259692	6-77		4-4		
8250008	1-57	8259693	6-77	8588712	4-18		
8250009	1-57	8259694	6-77	8588713	4-31		
8259370	1-29	8259695	6-77	8588714	4-69		
8259377	1-32	8259696	6-77	8588715	4-80		
	1-126	8259697	6-77	8588716	4-63		
8259390	1-	8259698	6-77	8588717	4-88		
8259487	3-38	8259699	6-77	8588718	4-49		
	4-37	8259700	6-77	8588719	4-43		
	6-	8259705	6-77	8588720	4-52		
8259488	3-38	8259712	1-89	8588721	4-54		
	4-37	8259714	6-75	8588722	4-53		
	6-	8259716	6-7	8588723	4-51		
8259491	3-	8259717	6-6	8588724	4-55		
8259494	4-65		6-35	8588725	4-12		
8259498	3-76	8259721	1-41		4-34		
	3-77		7-J	8588728	4-78		
8259501	6-19	8299492	3-	8588729	4-56		
8259504	6-20	8324648	7-47	8588730	4-64		
8259505	6-24	8326797	6-74	8588736	4-50		
8259506	3-39	8326801	6-74		4-95		
8259507	3-85	8583312	3-83	8588737	4-77		
8259509	3-35	8583313	3-87	8588738	4-73		
	7-G		3-98	8588739	4-61		
8259510	5-6	8583314	6-82	8588740	4-12		
8259511	5-8	8583315	6-82	8588741	4-		
	5-12	8583316	6-82	8588742	4-91		
8259521	3-17	8583324	3-29	8709180	1-103		
8259523	3-11	8583325	3-32		1-111		

4701 Controller
Models 1, 2, 3, and 5
Parts Catalog
Order No. SC31-3529-1

This manual is part of a library that serves as a reference source for systems analysts, programmers, and operators of IBM systems. You may use this form to communicate your comments about this publication, its organization, or subject matter, with the understanding that IBM may use or distribute whatever information you supply in any way it believes appropriate without incurring any obligation to you.

Your comments will be sent to the author's department for whatever review and action, if any, are deemed appropriate. Comments may be written in your own language; English is not required.

Note: *Copies of IBM publications are not stocked at the location to which this form is addressed. Please direct any requests for copies of publications, or for assistance in using your IBM system, to your IBM representative or to the IBM branch office serving your locality.*

Possible topics for comment are:

Clarity Accuracy Completeness Organization Coding Retrieval Legibility

If you wish a reply, give your name, company, mailing address, and date:

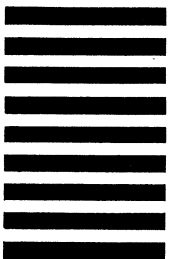
What is your occupation? _____

Number of latest Newsletter associated with this publication: _____

Thank you for your cooperation. No postage stamp necessary if mailed in the U.S.A.
(Elsewhere, an IBM office or representative will be happy to forward your comments or you may mail directly to the address in the Edition Notice on the back of the title page.)



NO
POSTAGE
NECESSARY
IF MAILED
IN THE
UNITED
STATES



BUSINESS REPLY MAIL

FIRST CLASS PERMIT NO. 40 ARMONK, N.Y.

POSTAGE WILL BE PAID BY ADDRESSEE:

**International Business Machines Corporation
Department 78C
1001 W.T. Harris Boulevard
Charlotte, NC, USA 28257**

SC31-3529-1

4701 Controller, Models 1, 2, 3, and 5 (PC) Printed in U.S.A. SC31-3529-1



SC31-3529-01

